

File No. F-C-07-001

Total Pages 10

CE MARKING

TECHNICAL DOCUMENTATION FILE

For: *YV2.4×2.5A-SA2L , YV2.8×2.8LA-SA4 , YV2.7×2.9LR4D-SAC

Note : The model name with “ * ” is tested equipment.

CONTENTS

1. SCOPE OF DOCUMENT	p.3
2. DECLARATION OF CONFORMITY	p.4
3. DESCRIPTION OF EQUIPMENT	p.5
4. DESCRIPTION OF EMC GROUPING	p.6
5. QUALITY ASSURANCE	p.7
6. TECHNICAL DOCUMENTATION	p.8
6.1 BLOCK DIAGRAM	p.9
6.2 LIST OF EMC PARTS	p.10
6.3 PRODUCT CATALOGUE	attachment 1
6.4 USER'S MANUAL	attachment 2
6.5 WIRING & CIRCUIT DIAGRAM	attachment 3
6.6 OUTLINE DIAGAM	attachment 4
7. TEST REPORT	
7.1 EMISSION TEST REPORT (REPORT NUMBER: ESJ-507132)	attachment 5
7.2 IMMUNITY TEST REPORT (REPORT NUMBER: ESJ-507135)	attachment 6

1. SCOPE OF DOCUMENT

This document is a compilation of EMC test reports and additional documents prepared by our engineers, to declare that the products listed below is in conformity with the EMC Directive (89/336/EEC), based on test results using harmonized standards, in accordance with Article 10-1 of the Directive.

We will therefore apply the CE mark to the products as set forth in the Directive.

Trade Mark:

FUJINON

Product Name:

CCTV LENS (Closed Circuit Television LENS)

Model Name:

***YV2.4×2.5A-SA2L , YV2.8×2.8LA-SA4 , YV2.7×2.9LR4D-SAC**

Note : The model name with “ * ” is tested equipment.

Applied Standards:

EMISSION

EN 61000-6-3:2001 A11:2004

IMMUNITY

EN 50130-4:1995 A2:2003

2. MANUFACTURER'S DECLARATION OF CONFORMITY

FUJINON Corporation
1-324 UETAKE, KITA-KU, SAITAMA CITY,
SAITAMA 331-9624, JAPAN

Declares, in sole responsibility, that the products:

Trade Mark:

FUJINON

Product Name:

CCTV LENS (Closed Circuit Television LENS)

Model Name:

***YV2.4×2.5A-SA2L, YV2.8×2.8LA-SA4, YV2.7×2.9LR4D-SAC**

Note : The model name with “ * ” is tested equipment.

Referred to this documentation, conforms to the following standards:

EN 61000-6-3:2001

EN 50130-4:1995/A1:1998/A2:2003

And complies with the requirements of the following directive:

EMC Directive 89/336/EEC

28.6, 2007
(Date of issue)

Hisao Takemae
(Signature)

Hisao Takemae
General Manager
TV Lenses Department

3. DESCRIPTION OF EQUIPMENT

3.1 Product Name

CCTV LENS (Closed Circuit Television LENS)

3.2 Trade Mark

FUJINON

3.3 Specifications (Refer to attached operation manual for details)

3.3.1 Focal Length	2.5mm – 6.0mm
3.3.2 Maximum Aperture	F1.2
3.4.3 Minimum Object distance	0.3m
3.3.4 Mass	45g
3.3.5 Size	33mm × 52mm × 39mm

3.4 Operating Environments

Residential, commercial, light industry.

3.5 Ports

Non

3.6 Cables

Iris Control Cable,

3.7 Suppression Components

Non

3.8 Manufacture

Name : Fujinon Corporation

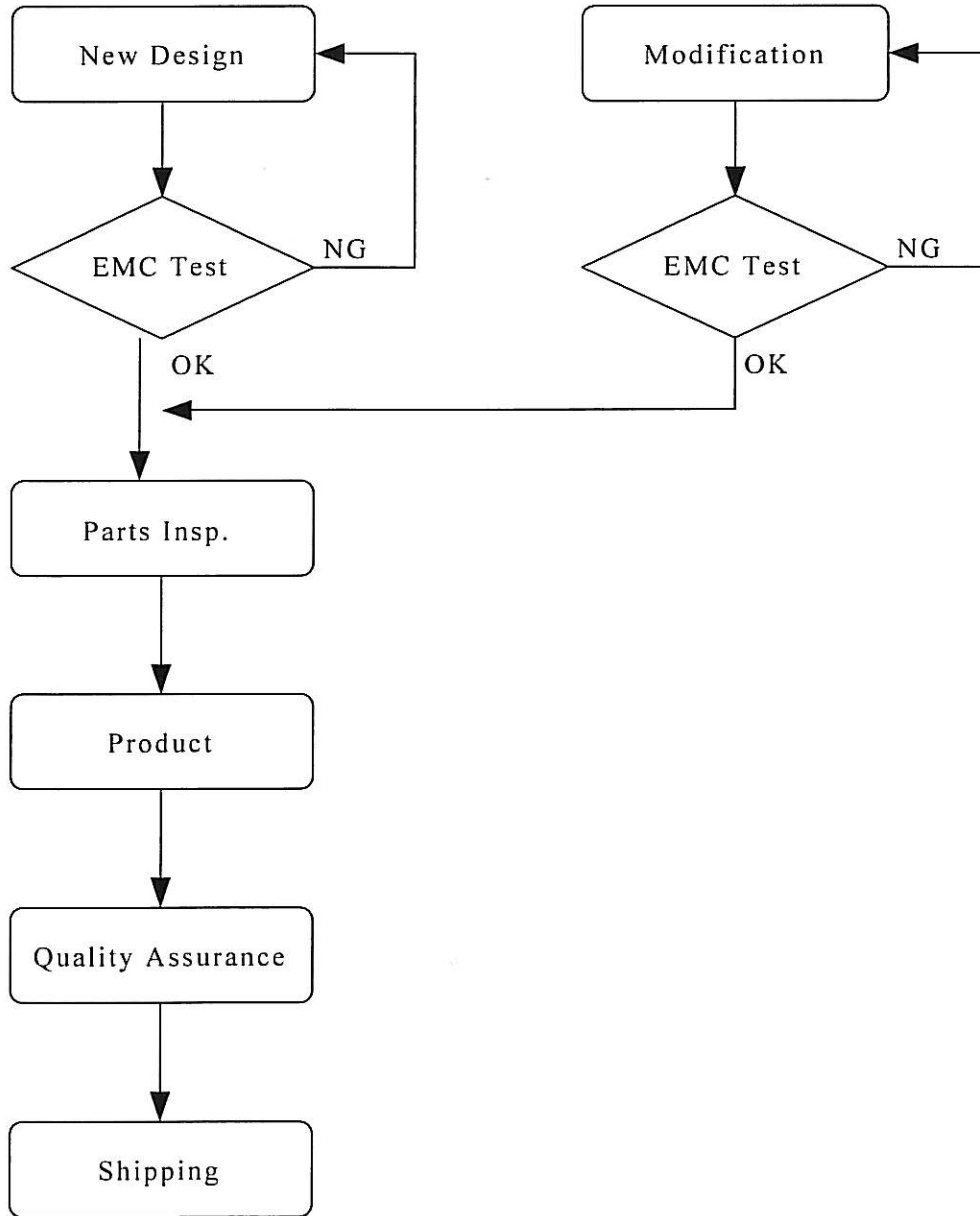
Address : 1-324 Uetake, Kita-ku, Saitama City, Saitama 331-9624 Japan

4. DESCRIPTION OF EMC GROUPING

Though the tested equipment is YV2.4×2.5A-SA2L, other models are also declared as EMC in this documentation. The reason is that electromagnetic components such as Printed Circuit Boards, Motors, are almost common to the tested equipment. Therefore it is concerned that the other models are equal to the tested equipment in meaning of EMC.

The lists of EMC relevant components are shown in paragraph 6.2. The list shows whether the components are common or non-common to the tested equipment.

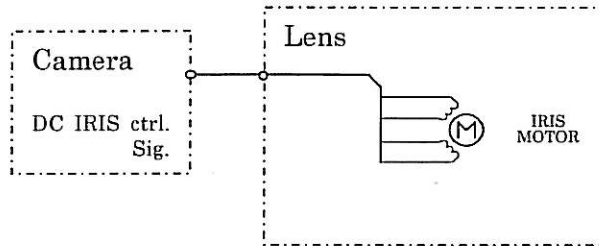
5. QUALITY ASSURANCE



6. TECHNICAL DOCUMENTATION

6.1 BLOCK DIAGRAM	p.9
6.2 LIST OF EMC PARTS	p.10
6.3 PRODUCT CATALOGUE	attachment 1
6.4 USER'S MANUAL	attachment 2
6.5 WIRING & CIRCUIT DIAGRAM	attachment 3
6.6 OUTLINE DIAGRAM	attachment 4

6.1 BLOCK DIAGRAM



6.2 LIST OF EMC PARTS

MODEL NAME	IRIS MOTOR			COVER MATERIAL
	A	B	C	
YV2.4×2.5A-SA2L	○			Plastic
YV2.8×2.8LA-SA4		○		Plastic
YV2.7×2.9LR4D-SAC			○	Plastic

Note: IRIS MOTOR A : AE-M10-0060 / Nihon Mini Motor
 IRIS MOTOR B : V-8112-01 / JAPAN PRECISION INSTRUMENTS
 IRIS MOTOR C : V-8112-02 / JAPAN PRECISION INSTRUMENTS