

FCC Warning

This device has been tested and found to comply with limits for a Class B digital device, pursuant to Part 2 and 15 of FCC Rules. These limits are designed to provide reasonable protection against harmful interference when the equipment is operated in a commercial environment. This equipment generates and radiates radio frequency energy and, if not installed and used in accordance with the user's manual, it may cause interference in which case users will be required to correct interference at their own expenses.

CE Warning

This is a Class B product. In a domestic environment, this product may cause radio interference in which case the user may be required to take adequate measures.

Introduction

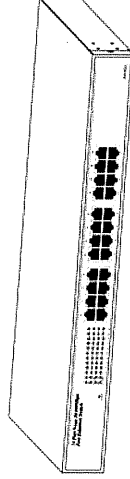
The Switch provides 24 10/100M ports. It was designed for easy installation and high performance in an environment where traffic on the network and the number of user increase continuously.

The switch also provides automatic crossover detection functionality on each port. It is simple and friendly to up-link to another switch without crossover cable.

The rack-mount size was specifically designed for medium to large workgroups. The Switch can be installed where space is limited; moreover it provides smooth network migration and easy upgrade to network capacity. The 19" size can be rack-mount on 19" cabinet.

Key Features

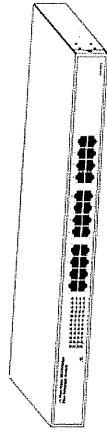
- Complies with the IEEE802.3 Ethernet, and IEEE802.3u Fast Ethernet
- 24 Port 10/100M Nway (Auto-negotiation) Switch
- 19" rack-mount size
- Non-blocking & Non-head-of-line blocking full wire speed forwarding
- Store-and-forward operation support
- Embedded 2.5 Mbits packet buffer
- Provides 8K MAC address entry
- Supports broadcast storm filtering
- All ports provide Auto-Negotiation and Auto-MDI/ MDI-X functions
- Supports flow control: Back pressure for Half-duplex and IEEE 802.3x for Full-duplex mode
- Smart plug & play



Package Contents

Before you start to install this Switch, please verify your package contain the following items:

- One Fast Ethernet Switch
- Rack-mount Kit for Rack Installation
- One AC Power Cord
- One User's Manual



24 Port Switch



User's Manual



Power Cord



Rack-mount Kit

Note: If any of these items is found missing or damaged, please contact your local supplier for replacement.

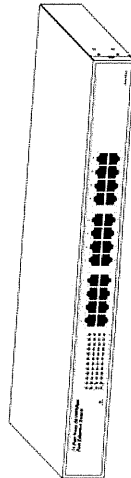
Front Panel (LEDs)

LED Indicators of 24 Ports 10/100M Switch

LED	Status	Description
Power	On	Power on
LINK/ACT	On	Port is for connection.
	Off	No connection.
	Flashing	Data is transmitting or receiving
10/100M	On	Port is on 100M status
	Off	Port is on 10M status.

24 Ports Nway Fast Ethernet Switch

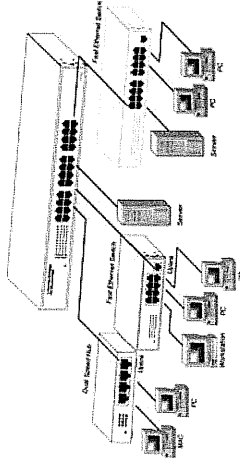
User's Manual



Connections

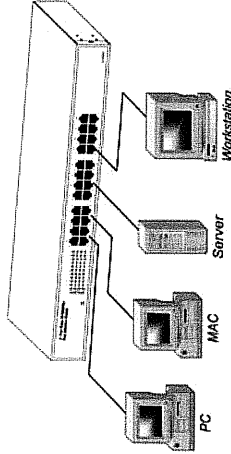
Switch/Hub to this 24 Ports Fast Ethernet Switch

This switch provides automatic crossover detection functionality for any port. It is simple and friendly to up-link to another switch without crossover cable.



PC/Other devices to this 24 Ports Fast Ethernet Switch

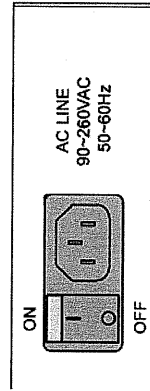
Via a twisted pair cable straight through, this switch can be connected to PCs, servers and other network devices.



Rear Panel (Power)

AC input

AC input (90~260V/AC, 50~60Hz) UL Safety



Technical Specifications

Standards	IEEE 802.3 10BaseT IEEE 802.3u 100BaseTX IEEE 802.3x Flow control
Features	Number of Ports: 24 MAC Address: 8K Buffer Memory: 2.5 Mbits Method: Store and Forward
Filtering/Forwarding Rates	100Mbps port – 148,800pps 10Mbps – 14,880pps
Transmission Media	10BaseT Cat. 3, 4, 5 UTP/STP 100BaseTX Cat. 5 UTP/STP
LED Indicators	Per Port: LINK/ACT, 10/100M Per Unit: Power
Power Requirement	90~260V/AC, 50~60Hz
Power Consumption	14 Watts (Max)
Dimensions	440 x 220 x 44 mm (L x W x H)
Weight	2.9 kg
Operating Temperature	0 to 55°C
Storage Temperature	-20 to 90°C
Humidity	10 to 90% RH (non-condensing)
Certifications	FCC Class B, CE

CHAPTER 1 3
 CONSOLE PORT FEATURES OVERVIEW 3

CHAPTER 2 4
 HARDWARE INSTALLATION 4
Accessories: 4

CHAPTER 3 5
 SOFTWARE SETTING 5
Open Hyper Terminal 5

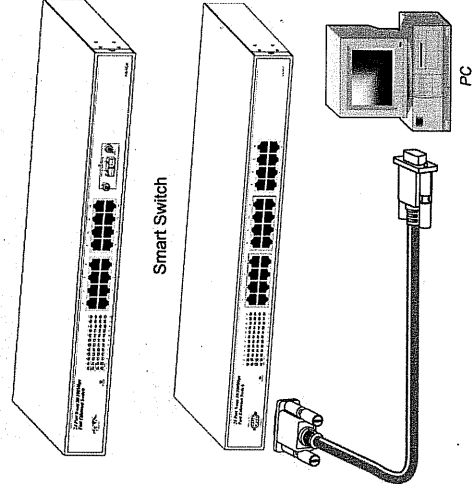
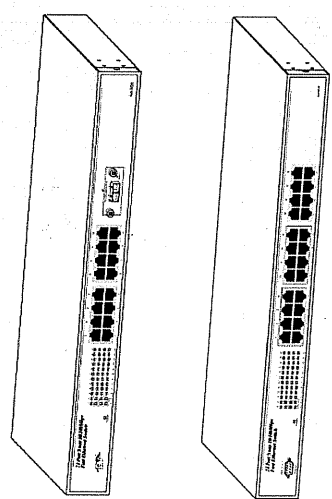
Hardware installation
Accessories:

- One Null model cable
- One D-SUB 9 pin female connector on front panel
- Fiber module (optional)-multimode/singlemode (ST or SC type connector)

Turn off the Smart Switch powers, and then connect the cable from PC Serial port to Smart Switch D-sub connector.

Console port features overview

- Supports real time status (speed, duplex, link, flow control) of each port.
- Supports TX / RX / Drop / CRC / Collision counter for statistics.
- Supports port setting for enable or disable operation.
- Supports port setting for N-Way or force mode operation.
- Supports Bandwidth Control on transmission and reception.
- The Port-based Trunk supports the speed up to 800Mbps.
- Supports broadcast storm control.
- Supports two priority queues for CoS.
- Supports Port-bases / 802.1p / Diff serv. priority three types of CoS.
- Supports weighted round robin scheduling for queues.
- Supports Port Mirror on TX / RX / both.
- Supports IGMP snooping.
- Supports Port-bases and 802.1q VLAN.
- Supports network loop detection.
- Optional fiber optic module for 100Base-FX application.



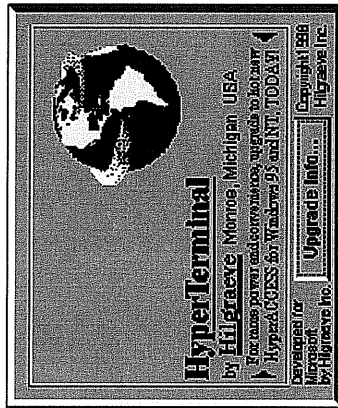
Software Setting

Open Hyper Terminal

Follow the steps to open the program.

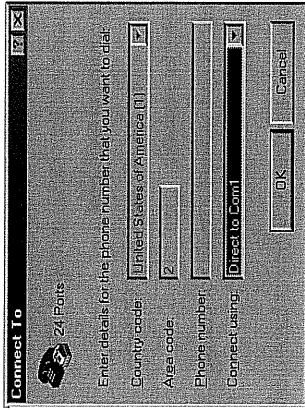
Step 1:

Start → Programs → Accessories → Communications → HyperTerminal



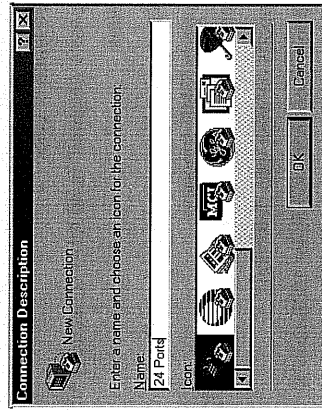
Step 2:

Enter any name for new connection, and then press OK.



Step 3:

Choose serial port that you connect.



Step 4:

Configuration COM port properties.

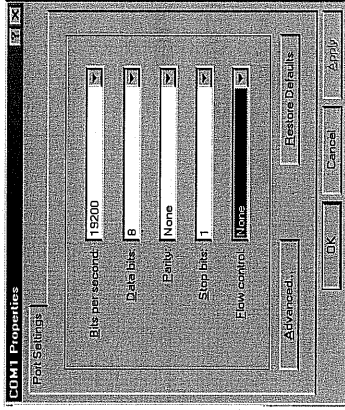
Bits per second: **19200**

Data bits: **8**

Parity: **None**

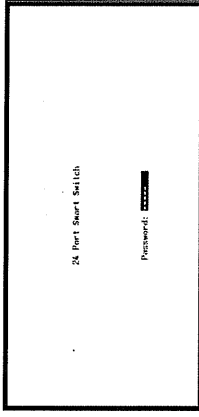
Stop bits: **1**

Flow control: **None**



Step 5:

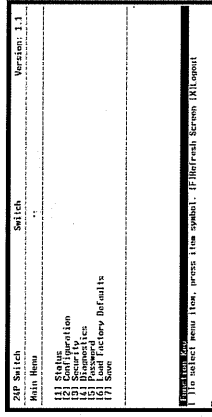
When your console port was set OK, you will see the login screen.



The password of factory default: admin

Step 6:

When you login were successful, you will see the main menu screen.



The configuration on PC is successful. Please follow the instruction on the screen to do all the setting.