

# 8 PORT FAST ETHERNET WEB-SMART SWITCH USER MANUAL

MODEL 523783





# INTRODUCTION

Thank you for purchasing the INTELLINET NETWORK SOLUTIONS™ 8-Port Fast Ethernet Web-Smart Switch, Model 523783.

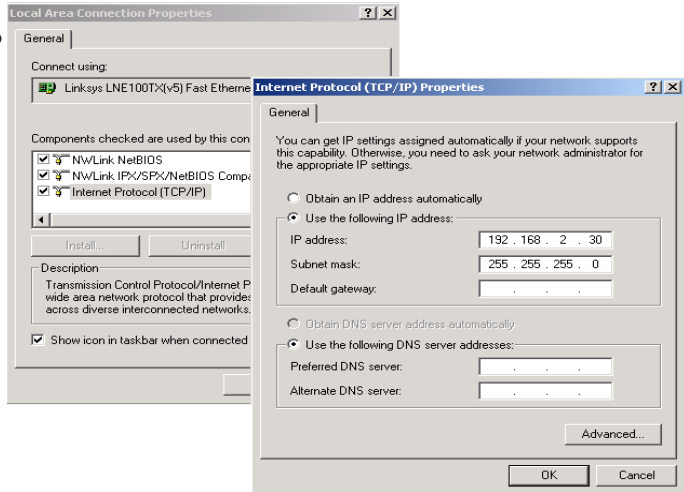
This device is designed for growing businesses that want control over their network without the cost and complexity of a full Layer 2/Layer 3 management implementation. This high-performing switch features a non-blocking wire-speed architecture for maximum data throughput. All RJ-45 ports automatically negotiate to the highest speed and support Auto Uplink™ technology to make the right link. In addition, an intuitive, Web-browser interface offers the simple Smart Switch management, making it a snap to monitor switch performance, configure ports, even set up port trunks, VLANs and traffic prioritization.

Shipped ready for use straight out of the box, INTELLINET NETWORK SOLUTIONS Web-Smart Switches are ideal for adding basic management to your unmanaged networks and extending your managed networks. The easy-to-follow instructions in this user manual help make setup and operation quick and simple, so you'll also soon be enjoying the benefits of these additional features:

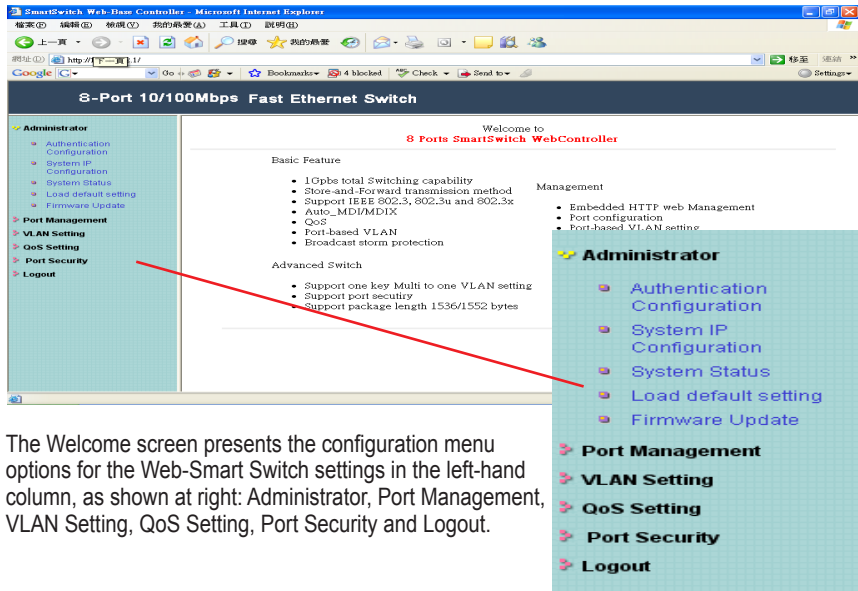
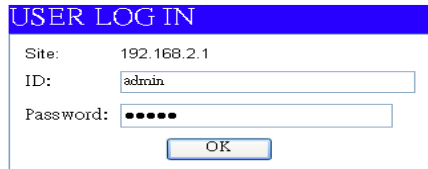
- 10/100 Mbps auto-sensing Auto-MDIX RJ-45 ports automatically detecting optimal network speeds
- Configuration via Web browser
- Supports NWAY Auto-Negotiation
- Store and forward switching architecture
- Full/half duplex operation
- IEEE 802.3x flow control for full duplex
- Zero packet loss back-pressure flow control for half duplex
- Packet filtering/forwarding rates: 148,800 pps (100 Mbps), 14,880 pps (10 Mbps)
- Supports port-based VLAN, 4 groups
- Supports three types of QoS: port-based, 802.1p and DiffServ
- Supports Spanning Tree protocol
- Bandwidth control for all ports with 8 levels
- Broadcast storm control
- Supports MAC address port security
- Supports user-defined maximum forwarding packet size (1536 or 1552)
- Supports up to 1024 MAC address entries
- 128 kBytes buffer memory
- Lifetime Warranty

# CONFIGURATION

1. Use a twisted pair cable to connect the Web-Smart Switch to your PC, then turn on power to the switch.
2. Set your PC's IP to 192.168.2.xx.



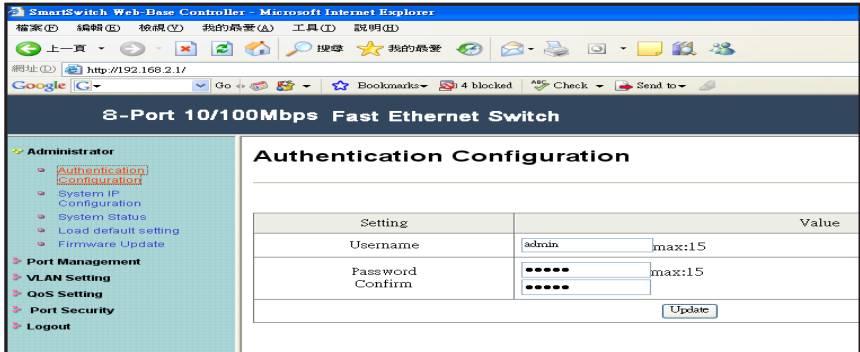
3. Open your Web browser, then go to the 192.168.2.1 site to display the login screen (right). Key in the username and password (the factory defaults are "admin" for both). Click "OK" to continue to the Web-Smart Switch's Welcome screen.



The Welcome screen presents the configuration menu options for the Web-Smart Switch in the left-hand column, as shown at right: Administrator, Port Management, VLAN Setting, QoS Setting, Port Security and Logout.

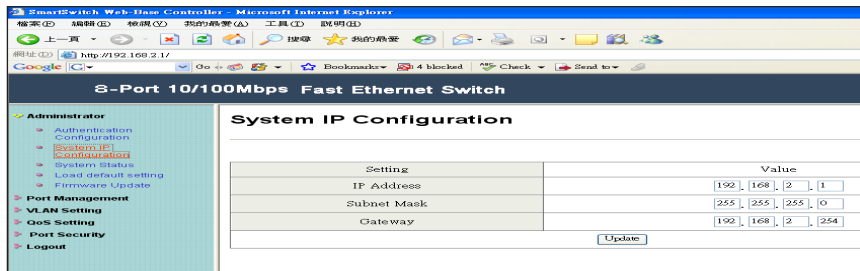
# Administrator

## Authentication



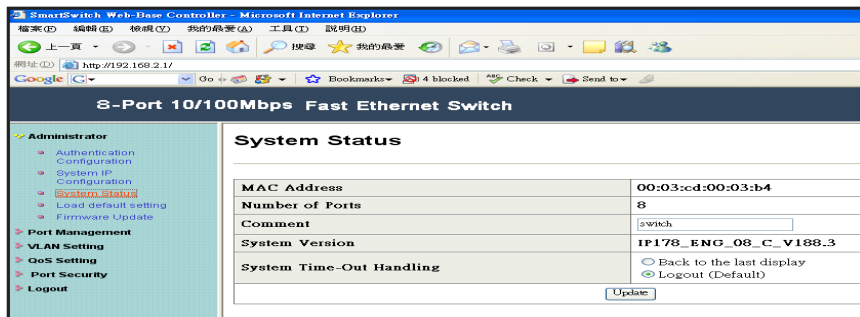
If you change the password — or create a new username and password — fill in the appropriate fields, then click “Update.” Restart the switch to effect any change.

## System IP Configuration



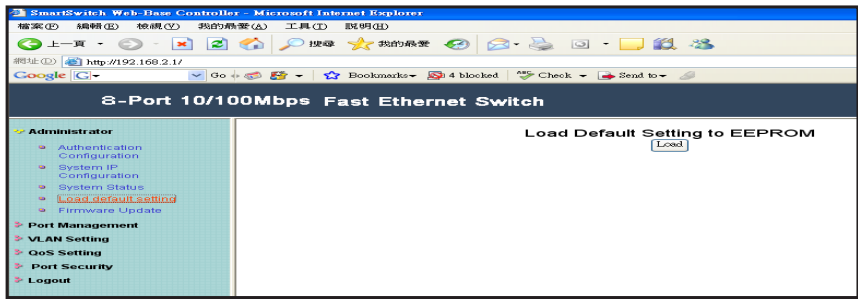
If you change the IP address, fill in the appropriate field(s); click “Update” to effect any change.

## System Status



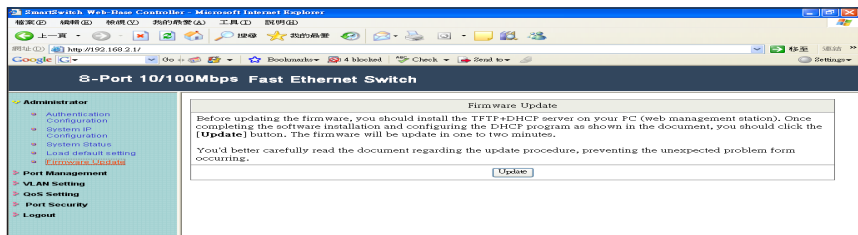
On this screen, you can view the switch’s MAC address and designate System Time-Out Handling as either “Back to the last display” or “Logout (Default).”

## Load Default Setting



To load the factory default settings, click “Load,” then restart the switch to effect the change.

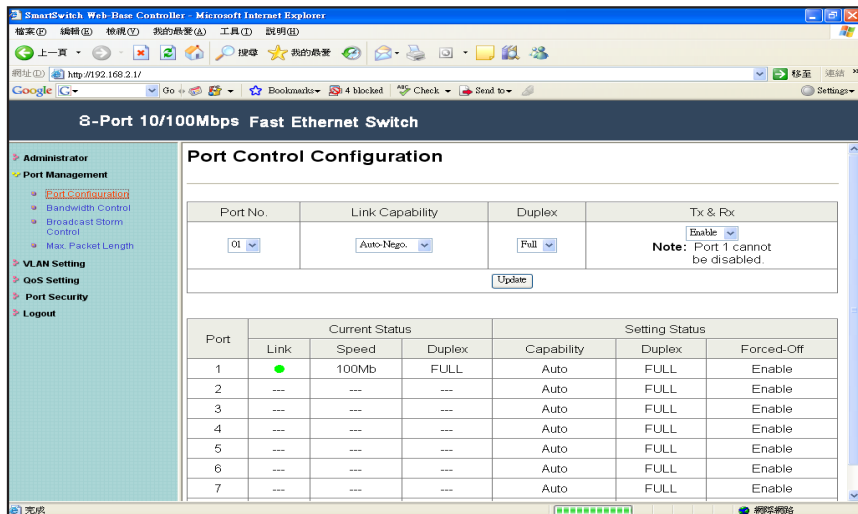
## Firmware Update



To update with new firmware, follow the instructions on this screen.

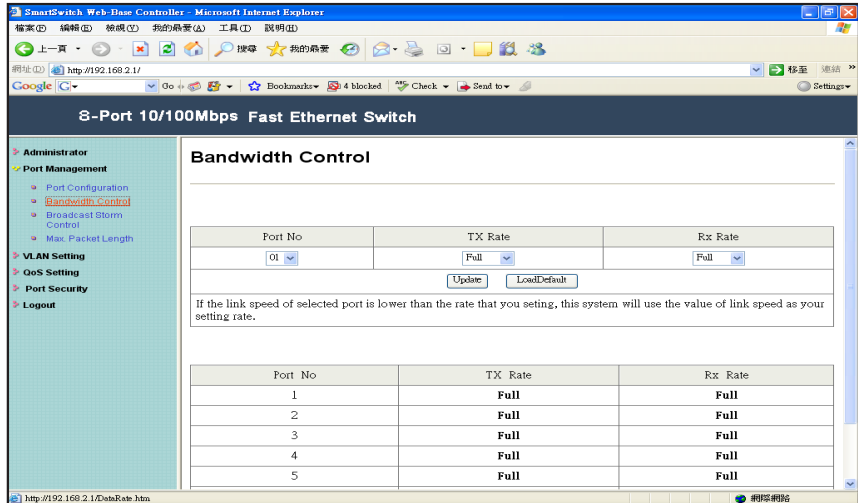
## Port Management

### Port Configuration



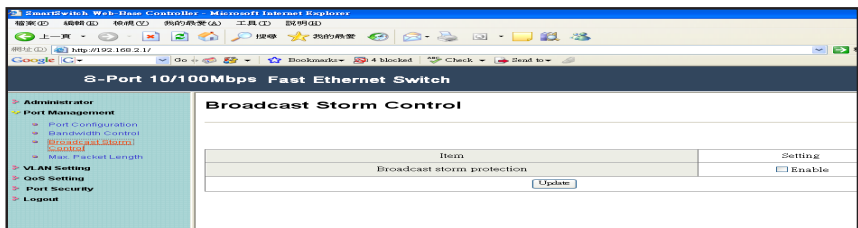
Port No. lets you select the port number you want to configure from the drop-down menu.  
 Link Capability lets you set the selected port in either Auto-Nego(tiation) mode or Force mode on 100M or 10M.  
 Duplex lets you designate the selected port as full or half duplex.  
 Tx & Rx lets you enable or disable the selected port.

## Bandwidth Control



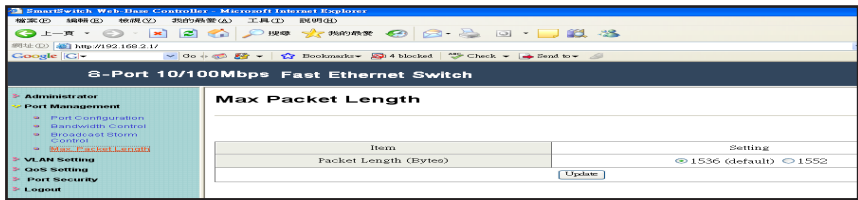
Port No. lets you select the port number you want to configure from the drop-down menu.  
 Tx Rate lets you set the transmission rate for the selected port: 128 kbps, 256 kbps, 512 kbps, 1 Mbps, 2 Mbps, 4 Mbps, 8 Mbps or Full (no limit).  
 Rx Rate lets you set the receiving rate for the selected port: 128 kbps, 256 kbps, 512 kbps, 1 Mbps, 2 Mbps, 4 Mbps, 8 Mbps or Full (no limit).

## Broadcast Storm Control



This screen lets you enable/disable the broadcast storm protection feature.

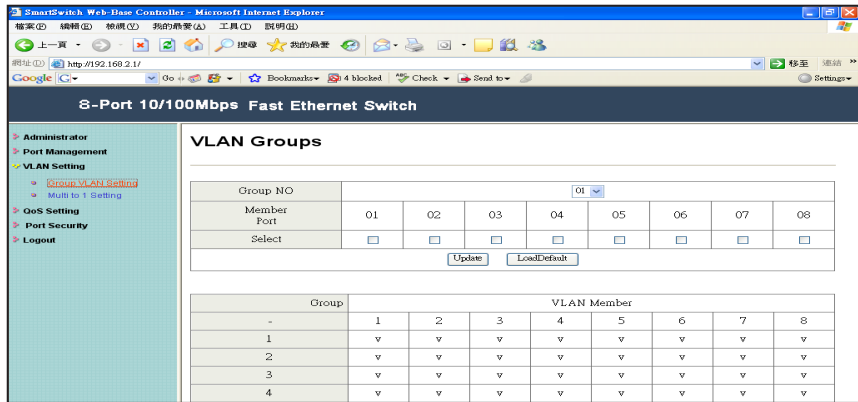
## Max Packet Length



Here, select either 1536 or 1552 Bytes as the maximum packet length supported by the switch.

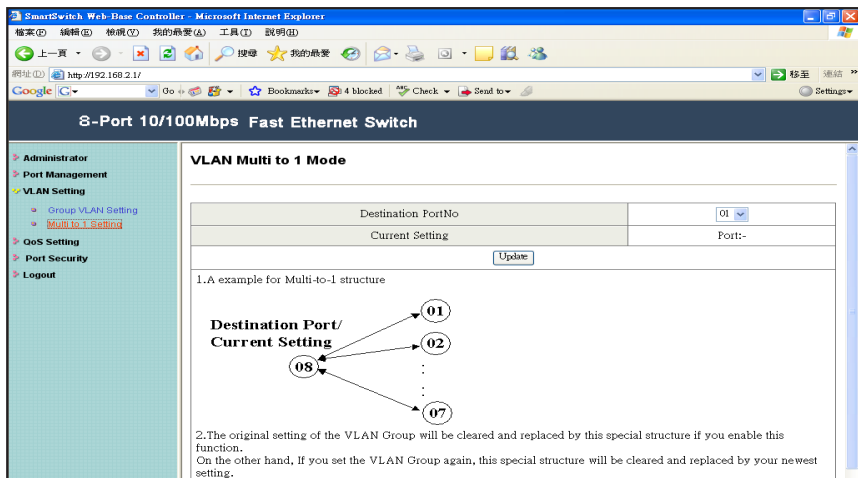
## VLAN Setting

### Group VLAN Setting



Four VLAN groups can be used. Select a group, then click the port number you want included.

### VLAN Multi to 1 Mode

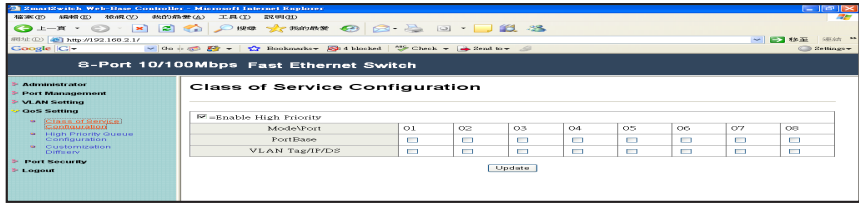


Once this setting's been activated, ports can only connect with the designated destination port.



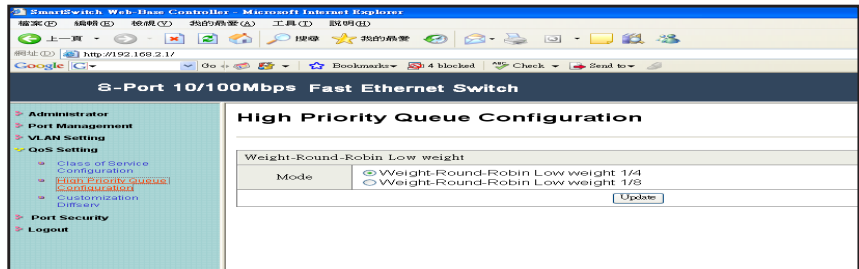
# QoS Setting

## Class of Service Configuration



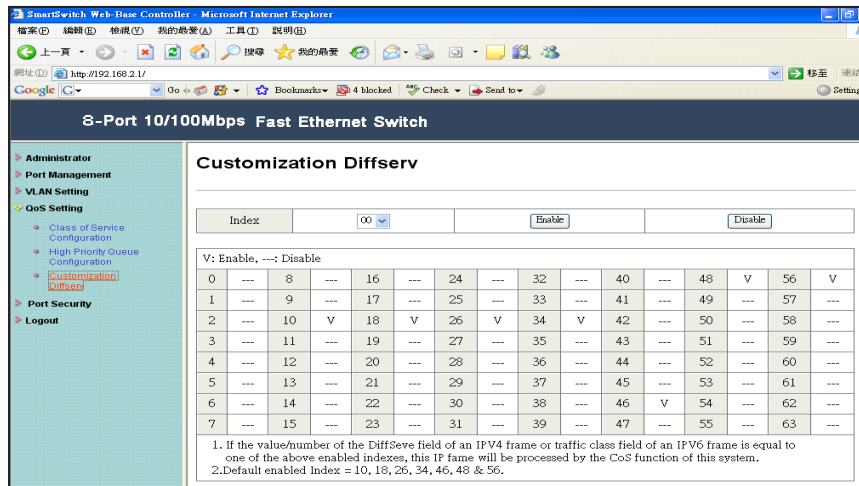
On this screen, select the class of service for each port.

## High Priority Queue Configuration



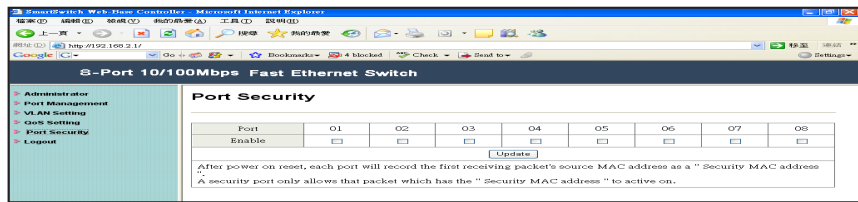
On this screen, select the Weight Round Robin weight: 1/4 or 1/8.

## Customization DiffServ



To change the settings, follow the instructions on the screen.

## Port Setting



When this function is enabled, the port will record the first receiving-source MAC address as the security MAC address, and will allow only the packet which has the MAC address to be active on the port.

## Logout

Click to log off.

# SPECIFICATIONS

## Standards

- IEEE 802.3 (10Base-T Ethernet)
- IEEE 802.3u (100Base-TX Fast Ethernet)
- IEEE 802.3x (flow control, for full duplex mode)
- IEEE 802.1p (QoS)

## General

- Media support:
  - 10Base-T Cat3, 4, 5 UTP/STP RJ-45
  - 100Base-TX Cat5 UTP/STP RJ-45
- Packet filter/forwarding rate:
  - 148,800 pps (100 Mbps)
  - 14,880 pps (10 Mbps)
- Backplane speed: 1.6 Gbps
- Buffer memory: 128 kBytes
- MAC address table: 1024 entries
- Switch architecture: store and forward
- Certifications: FCC Class B, CE Mark

## Smart Features

- Port-based VLAN: 4 groups
- QoS Quality of Service:
  - port-based
  - tag-based
  - DiffServ
- Port configuration options
  - enable/disable
  - 10, 100 Mbps or auto-negotiation
  - full duplex or half duplex
  - bandwidth control
  - MAC address port security enable/disable

- Bandwidth control options: 128 / 256 / 512 / 1,024 / 2,048 / 4,096 / 8,192 kbps; no limit

## LEDs

- Power
- Link/Tx
- 10/100 Mbps

## Power

- Internal power supply, 100 – 240 V AC, 50/60 Hz
- Power consumption: 4 Watts (maximum)

## Environmental

- Metal housing, desktop size
- Dimensions: 230 (W) x 123 (L) x 44 (H) mm (9 x 4.8 x 1.7 in.)
- Weight: 0.9 kg (2.0 lbs.)
- Operating temperature: 0 – 60°C (32 – 140°F)
- Operating humidity: 10 – 90% RH, non-condensing
- Storage temperature: -20 – 90°C (-4 – 194°F)

## Package Contents

- Fast Ethernet Web-Smart Switch
- 19" mounting brackets
- Power cable
- User manual





# INTELLINET™

NETWORK SOLUTIONS

BRINGING NETWORKS TO LIFE

**[www.intellinet-network.com](http://www.intellinet-network.com)**

Are you completely satisfied with this product?  
Please contact your INTELLINET NETWORK SOLUTIONS™ dealer  
with comments or questions.

Copyright © INTELLINET NETWORK SOLUTIONS  
All products mentioned are trademarks or registered trademarks of their respective owners.