



PTZ Series

Monitor Wider Areas
with a Single Camera



Full HD Megapixel Rugged Long-range PTZ Cameras

Pan-tilt-zoom (PTZ) cameras are capable of remote directional and zoom control. LILIN PTZ cameras offer exceptional performance at an affordable price.



MINI DOME



MINI DOME



INDOOR



OUTDOOR

With a 360° continuous pan rotation and 120° tilt angle ranges, the cameras field of view can be quickly zoomed and repositioned as needed. LILIN PTZs provide IP66-rated protection against water and dust. With built-in heaters and fans, the cameras are able to be used in temperatures ranging from -40°C - +50°C. Remote pan/tilt/zoom operations with 36X optical lens makes it possible to zoom in on distant object with absolute clarity.



PTZ series cameras

Sustainable cameras ideal for numerous applications

LILIN PTZs are capable of streaming HD video at up to 30 frames per second. Featuring Wide Dynamic Range (WDR) feature, PTZ cameras capture highlights and shadows simultaneously, eliminating pixilation and smear. Combine with 3D Noise Reduction technology, the contrast of images in dark and bright area is dramatically improved.

Further features include privacy zones, comprehensive scheduling, 2-way audio, weighted mode, digital PTZ, alarm activation by motion, audio detections. Capable of making 360° continuous rotations, users can accurately position the cameras to identify specific targets.



Features

- 360-degree continuous rotations
- 1080p image
- 36X / 30X / 26X / 20X / 18X / 12X / 10X optical zoom
- Power over Ethernet (PoE)
- 2 megapixel
- 30 frames per second (FPS)
- IP66-rated outdoor housing
- Pan-Tilt-Zoom
- Day/Night camera with minimum illumination of 0.5 lux
- Defog feature
- ONVIF Profile S - open integration with 3rd party systems
- Long range focal length
- Durable design
- Simultaneous Motion-JPEG and H.264 compression streams
- Pendant/wall mount



20X / 30X IR PTZ Camera

The IRS1204/8 and IRS1304/8 are infrared PTZ options with built-in IR LEDs that are able to see in almost complete darkness, providing clear, detailed video clarity at night-time for round-the-clock video surveillance. IR security PTZ -IRS1204/8 and IRS1304/8 see at night with IR distance of 150M.

The IRS1204/8 and IRS1304/8 are indoor fitted 20X Day & Night 2MP HD PTZ Dome IR IP Camera that in compliance with LILIN's already established HD PTZ series of cameras. The camera can be powered through AC24V / AC100 - 240V.



The high-speed domes are capable of streaming HD video at up to 30 FPS. Featuring LILIN's Wide Dynamic Range (WDR) feature, the IRS1204/8 and IRS1304/8 capture highlights and shadows simultaneously, eliminating pixilation and smear. The IP66-rated housing is designed to help the camera body withstand rain and dust and ensures operation under a multitude of harsh weather conditions. Combine this with digital noise reduction technology and adaptive tone reproduction and the contrast of images in bright or dark areas is dramatically improved. Capable of making 360° continuous rotations, users can accurately position the camera to identify specific targets.





Outdoor weather proof PTZs

VANDAL RESISTANT

- IP66 rated external housing protected against rain and dust
- Delivers exceptional outdoor weather proof video surveillance
- PTZs can be used in varying weather conditions
- Able to withstand temperatures ranging from -40°C – 50°C (-40°F – 122°F)



360° VIEWS

- 360° views with tilt functionality
- Powerful 36X / 26X / 30X / 20X / 18X optical zoom
- Video monitoring in absolute detail

FIT A WIDE VARIETY OF APPLICATIONS

- PTZs are designed for use under harsh and unforgiving environments
- Applicable to critical infrastructures such as mining sites, hydroelectric power plants, freeway, railway, or chemical/hazardous environments



IPS4304E / IPS4308E
IPS4204E / IPS4208E
IPS8264P / IPS8268P
IPS8364N(P) / IPS8368N(P)



DISCREET SURVEILLANCE

DISCREET SURVEILLANCE

- Discreet and reliable video surveillance with style
- Compact size allows it to fit into limited space
- Mini PTZs offer a discreet appearance which blends into any architectural environment
- Perfect for mid-sized applications



IPS3102E
IPS3124N / IPS3128N
IPS3124P / IPS3128P



IPS2102E
IPS2124N / IPS2128N
IPS2124P / IPS2128P

ECONOMICAL CHOICE

- High speed and precision pan/tilt/zoom system
- Enable a number of programmable preset positions
- Economical PTZs with a performance of 10X or 12X optical zoom and 540TV lines.
- Easy and cost-efficient installation in demanding environments

FUTURE PROOF

- Superior clarity with 2 megapixel resolution
- PoE provides cost-effective power to the PTZs by using the Ethernet cable
- Various mounting brackets available to assist with all sorts of environments
- Full PTZ control via mobile devices through LILINViewer app



Indoor sustainable PTZs

DAY/NIGHT FUNCTIONALITY

- Sharp black and white images in poor lighting conditions
- Provide perfect color images in low light environments

WIDE AREA COVERAGE

- PTZ cameras can be remotely controlled to monitor a wider area than traditional fixed cameras
- Wide large area scenes can be effectively monitored through 360° panning, 120° tilt, and 36X / 26X / 20X / 18X optical zoom



POPULAR CHOICE

- Pan/tilt/zoom (PTZ) cameras are a popular choice for applications that require the ability to zoom and position to a specific area of interest
- PTZs are designed for quick installation in demanding indoor environments such as business premises, shop floor, or indoor parking



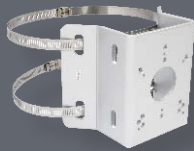
IPS5300E / IPS5200E
IPS9264P / IPS9368P
IPS5304(8) / IPS5204(8)
IPS9364N(P) / IPS9368N(P)



Corner / pole mount bracket



PIH-510CPM



PIH-CPM

Pendant mount bracket



PIH-520HB

Various mounting options

LILIN offers a number of versatile mounting options for its PTZ cameras - indoor/outdoor pendant mount brackets, wall mount brackets, or pendant ceiling mount brackets. A variety of quality rugged weather/vandal proof mounts options are designed to work in a wide range of applications, and allow system integrators for easy installation of PTZ cameras into ceiling or wall.



PIH-76WM + Indoor PTZ



PIH-76WM + Indoor PTZ



PIH-76WM + Indoor PTZ



Wall mount bracket



PIH-76WM



PIH-520L

PIH-520LB

Swan neck bracket



PIH-520G



PIH-510CPM + PIH-520LB + Outdoor PTZ
or PIH-520LB + Outdoor PTZ



PIH-CPM + PIH-520L + Outdoor PTZ
or PIH-520L + Outdoor PTZ








PIH-520G + Outdoor PTZ







PIH-520HB + Outdoor PTZ

PTZ IP Camera

				
Number	IRS1204 IRS1208	IRS1304 IRS1308	IPS4304E IPS4308E	IPS4204E IPS4208E
Resolution	1080P (D & N)	1080P (D & N)	1080P (D & N)	1080P (D & N)
Lens zoom ratio	20 X Optical	30 X Optical	30 X Optical	20X Optical
Focal Length	4.7 mm - 94 mm	4.4 mm - 132 mm	4.4mm - 132 mm	4.7mm - 94mm
Pick up element	1/2.8 Type CMOS	1/3 Type CMOS	1/3 Type CMOS	1/2.8 Type CMOS
Effective pixels	1,944 x 1,224	1944 x 1092	1944 x 1092	1944 x 1224
Min. illumination	0.4 Lux [F1.6, 1/30(1/25)Sec, 50%, AGC On] 0.03 Lux [F1.6, 1/30(1/25)Sec, 50%, AGC On]	0.4 Lux [F1.4, 1/30(1/25)Sec, 50%, AGC On] 0.03 Lux [F1.4, 1/30(1/25)Sec, 50%, AGC On]	ICR-OFF 0.1 Lux / F1.4(Wide) ICR-ON 0.01 Lux / F1.4(Wide)	ICR-OFF 0.1 Lux / F1.6(Wide) ICR-ON 0.01 Lux / F1.6(Wide)
Iris range	F1.6 - 36.2, close	F1.6 - 36.2, close	F1.4 - 32, close	F1.6 - 36.2, close
FPS at max. resolution	30FPS	30FPS	30FPS	30FPS
Max. IR distance	150M	150M	-	-
Compression	H.264, Motion JPEG	H.264, Motion JPEG	H.264, Motion JPEG	H.264, Motion JPEG
Digital zoom ratio	12X	12X	12X	12X
Sense Up	Y	Y	Y	Y
Electronic shutter speed	Y	Y	Y	Y
Digital noise reduction	Y	Y	Y	Y
Wide dynamic range	Y	Y	Y	Y
Back light compensation	Y	Y	Y	Y
Enhanced Intensity			Y	-
Defog	-	-	Y	-
Electronic Image Stabilization	Y	Y	Y	-
Privacy masking	8 zones	16 zones	16 zones	8 zones
Preset	128	128	128	128
Alarm I/O	6/2	6/2	6/2	6/2
Schedule setting	Y	Y	Y	Y
IP rating	IP66	IP66	IP66	IP66
Operating temperature	-30°C - +50°C (-22°F - 122°F)	-30°C - +50°C (-22°F - 122°F)	-40°C - +50°C (-40°F - 122°F) -10°C - + 50°C (14°F - 122°F)/POE +	- 40°C - + 50°C (-40°F - 122°F)/AC -10°C - + 50°C (14°F - 122°F)/PoE+
Power supply	AC24V AC100-240V -	AC24V AC100-240V -	AC24V AC100-240V PoE+	AC24V AC100-240V PoE+
Power consumption	AC24V, 60W AC100-240V, 260W	AC24V, 60W AC100-240V, 260W	AC24V, 37W (with Heater) AC100-240V, 48W (with Heater), PoE+, 14W	AC24V, 37W (with Heater) AC100-240V, 48W (with Heater), PoE+, 14W
Mobile phone	iPhone, iPad, Android	iPhone, iPad, Android	iPhone, iPad, Android	iPhone, iPad, Android
Audio capability	2-way	2-way	2-way	2-way
Micro SD/SDHC/ SDXC card	Y	Y	Y	Y
ONVIF	Profile S	Profile S	Profile S	Profile S

				
IPS5300E	IPS5304 IPS5308	IPS5200E	IPS5204 IPS5208	IPS3102E
1080P (D & N)	1080P (D & N)	1080P (D & N)	1080P (D & N)	1080P (D & N)
30 X Optical	30 X Optical	20X Optical	20X Optical	10X Optical
4.4mm - 132.0mm	4.4mm - 132.0mm	4.7 mm - 94 mm	4.7 mm - 94 mm	4.9 mm - 49 mm
1/3 Type CMOS	1/3 Type CMOS	1/2.8 Type CMOS	1/2.8 Type CMOS	1/3" MOS Sensor
1944 x 1092	1944 x 1092	1944 x 1224	1944 x 1224	1944 x 1092
ICR-OFF 0.1 Lux / F1.4(Wide)	ICR-OFF 0.1 Lux / F1.4(Wide)	ICR-OFF 0.1 Lux / F1.6(Wide)	ICR-OFF 0.1 Lux / F1.6(Wide)	Color : 0.5 Lux at F1.8 Mono : 0.1 Lux at F1.8
ICR-ON 0.01 Lux / F1.4(Wide)	ICR-ON 0.01 Lux / F1.4(Wide)	ICR-ON 0.01 Lux / F1.6(Wide)	ICR-ON 0.01 Lux / F1.6(Wide)	
F1.4 - 32, close	F1.4 - 32, close	F1.6 - 36.2, close	F1.6 - 36.2, close	F1.8 - F16, close
30FPS	30FPS	30FPS	30FPS	30FPS
-	-	-	-	-
H.264, Motion JPEG	H.264, Motion JPEG	H.264, Motion JPEG	H.264, Motion JPEG	H.264, Motion JPEG
12X	12X	12X	12X	64X
Y	Y	Y	Y	Y
Y	Y	Y	Y	Y
Y	Y	Y	Y	Y
Y	Y	Y	Y	Y
Y	Y	Y	Y	Y
Y	Y	-	-	-
Y	Y	-	-	-
Y	Y	-	-	-
16 zones	16 zones	8 zones	8 zones	8 zones
128	128	128	128	128
6/2	6/2	6/2	6/2	-
Y	Y	Y	Y	Y
-	-	-	-	-
-10°C - + 50°C (14°F - 122°F)	-10°C - + 50°C (14°F - 122°F)	-10°C - + 50°C (14°F - 122°F)	-10°C - + 50°C (14°F - 122°F)	-10°C - + 50°C (14°F - 122°F)
-	-	-	-	-
-	AC24V AC100-240V	-	AC24V AC100-240V	DC12V
PoE+	-	PoE+	-	PoE+
PoE+, 14W	AC24V, 15.5W AC100-240V, 16W	PoE+, 14W	AC24V, 15.5W AC100-240V, 16W	DC12V, 11.5W PoE+, 13W
iPhone, iPad, Android	iPhone, iPad, Android	iPhone, iPad, Android	iPhone, iPad, Android	iPhone, iPad, Android
2-way	2-way	2-way	2-way	2-way
Y	Y	Y	Y	Y
Profile S	Profile S	Profile S	Profile S	Profile S

PTZ IP Camera

			
Number	IPS2102E	IPS8364N / IPS8368N IPS8364P / IPS8368P	IPS8264P / IPS8268P
Resolution	1080P (D & N)	960H(D & N)	960H(D & N)
Lens zoom ratio	10X Optical	36X Optical	26X Optical
Focal Length	4.9 mm – 49 mm	3.3mm – 119mm	3.2mm – 83.2mm
Pick up element	1/3" MOS Sensor	Sony 1/4" 960H	Sony 1/4" 960H
Effective pixels	1944 x 1092	976 x 494 (NTSC) 976 x 582 (PAL)	976 x 582 (PAL)
Min. illumination	Color : 0.5 Lux at F1.8 Mono : 0 Lux (IR ON)	0.1 Lux at F1.4	0.2 Lux at F1.6
Iris range	F1.8 – F16, close	F1.4 – 32, close	F1.6 – 32, close
FPS at max. resolution	30FPS	30/25 FPS	30/25 FPS
Max. IR distance	16M	-	-
Compression	H.264, Motion JPEG	H.264, Motion JPEG	H.264, Motion JPEG
Digital zoom ratio	64X	256X	256X
Sense Up	Y	-	-
Electronic shutter speed	Y	Y	Y
Digital noise reduction	Y	2D+3D	2D+3D
Wide dynamic range	Y	Y	Y
Back light compensation	Y	BLC+HLC	BLC+HLC
Horizontal resolution	-	650 TV Lines	650 TV Lines
Defog	-	-	-
Electronic Image Stabilization	-	-	-
Privacy masking	8 zones	8 zones	8 zones
Preset	128	128	128
Alarm I/O	-	3/1	3/1
Schedule setting	Y	Y	Y
IP rating	-	IP66	IP66
Operating temperature	-10°C – + 50°C (14°F – 122°F)	-40°C – +50°C (-40°F – 122°F)	-40°C – +50°C (-40°F – 122°F)
Power supply	DC12V PoE+	AC24V AC100–240V	AC24V AC100–240V
Power consumption	DC12V, 13W PoE+, 15.5W	25W (with Heater) 63W (with Heater)	25W (with Heater) 63W (with Heater)
Mobile phone	iPhone, iPad, Android	iPhone, iPad, Android	iPhone, iPad, Android
Audio capability	2-way	2-way	2-way
Micro SD / SDHC / SDXC card	Y	-	-
ONVIF	Profile S	Profile S	Profile S

			
IPS9364N / IPS9368N IPS9364P / IPS9368P	IPS9264P / IPS9268P	IPS3124N / IPS3128N IPS3124P / IPS3128P	IPS2124N / IPS2128N IPS2124P / IPS2128P
960H(D & N)	960H(D & N)	Full D1 (D & N)	Full D1 (D & N)
36X Optical	26X Optical	12X Optical	12X Optical
3.3mm – 119mm	3.2mm – 83.2mm	3.8mm – 45.6mm	3.8mm – 45.6mm
Sony 1/4" 960H	Sony 1/4" 960H	Sony 1/4" Super HAD CCD	Sony 1/4" Super HAD CCD
976 x 494 (NTSC) 976 x 582 (PAL)	976 x 582 (PAL)	768 x 494 (NTSC) 752 x 582 (PAL)	768 x 494 (NTSC) 752 x 582 (PAL)
0.1 Lux at F1.4	0.2 Lux at F1.6	0.3 Lux at F1.6	0.3 Lux at F1.6
F1.4 – 32, close	F1.6 – 32, close	F/1.6 – 32, close	F/1.6 – 32, close
30/25 FPS	30/25 FPS	30/25 FPS	30/25 FPS
-	-	-	16M
H.264, Motion JPEG	H.264, Motion JPEG	H.264, AVC, Level 3, Motion JPEG	H.264, AVC, Level 3, Motion JPEG
256X	256X	-	-
-	-	-	-
Y	Y	Y	Y
2D+3D	2D+3D	Y	Y
Y	Y	-	-
BLC+HLC	BLC+HLC	Y	Y
650 TV Lines	650 TV Lines	480 TV Lines	480 TV Lines
-	-	-	-
-	-	-	-
8 zones	8 zones	4 zones	4 zones
128	128	128	128
3/1	3/1	-	-
Y	Y	Y	Y
-	-	-	-
-10°C – + 50°C (14°F – 122°F)	-10°C – + 50°C (14°F – 122°F)	-10°C – + 50°C (14°F – 122°F)	-10°C – + 50°C (14°F – 122°F)
AC24V AC100–240V	AC24V AC100–240V	AC24V AC100–240V	AC24V AC100–240V
15W	15W	11.5 W	13W
iPhone, iPad, Android	iPhone, iPad, Android	iPhone, iPad, Android	iPhone, iPad, Android
2-way	2-way	1-way	1-way
-	-	-	-
Profile S	Profile S	Profile S	Profile S



**WORLD HEADQUARTERS
MERIT LILIN ENT. CO., LTD.**

Tel: +886 2 2298 8988

Fax: +886 2 2298 9077

Web: www.meritlilin.com

Email: sales@meritlilin.com

Address: No. 20, Wugong 6th Road,
New Taipei Industrial Park, Wugu District,
New Taipei City, Taiwan 248

INTERNATIONAL OFFICES

Australia

LILIN Australia Pty. Ltd.

Sydney Office

Tel: +61 (02)9646 4878

Fax: +61 (02) 9646 5088

Email: sales@lilin.com.au

Address: Unit 25/4A Bachel Avenue Lidcombe,
NSW 2141

Melbourne Office

Tel: +61 (03) 9645 6129

Fax: +61 (03) 9645 6202

Email: sales@lilin.com.au

Address: Unit 18, 3 Westside Avenue Port
Melbourne, VIC 3207

Brisbane Office

Tel: +61 (07) 3715 6663

Fax: +61 (07) 3715 6669

Email: sales@lilin.com.au

Address: Unit 9, 20 Jjaws Street, Sumner Park,
QLD 4074

China

Merit LILIN China

Guangzhou Office

Tel: +86 0282265182 ext. 101

Fax: +86 02082265158

Email: penry.peng@meritlilin.com.cn

Address: Floor 2, No.1, Kehui First St., Kehui
Jingu, No.99, Kexue Boulevard, Sci. City,
Guangzhou, China

Beijing Office

Tel: +86 010 58690236

Fax: +86 02082265158

Email: ying.liu@meritlilin.com.cn

Address: Room 1601, Block A, Jianwai SOHO,
No.39, East Third Ring Road Middle, Chaoyang
District, Beijing, China

Shanghai Office

Tel: +86 02152858565

Fax: +86 02082265158

Email: helena.wu@meritlilin.com.cn

Address: Room 216, The Point Jingan Mansion,
No.555, Anyuan Road, Jing'an District,
Shanghai, China

France Office

Merit LILIN (EUROPE) SA

Tel: +33 1 3972 9898

Fax: +33 1 3972 9896

Email: contact@meritlilin.fr

Address: 34 Rue Des Cayennes 78700
Conflans Ste Honorines

Germany Office

LILIN Technology GMBH

Tel: +49 (0) 2103 9631788

Fax: +49 (0) 2103 9631789

Email: info@lilin.de

Address: Nikolaus-Otto-Str. 1 40721 Hilden

Hong Kong Office

Merit LILIN CCTV HK Ltd.

Tel: +852 2889 2862

Fax: +852 2889 3134

Email: roger@meritlilinhk.com

Address: Flat A3, 7/F, Kailey Industrial Centre,
12 Fung Yip Street, Chaiwan

Italy Office

Merit LILIN ITALIA SRL

Tel: +39 0542 781594

Fax: +39 0542 1952004

Email: info@meritlilin.it

Address: Via Ercolani, 11/F 40026 Imola (Bo)

Malaysia Office

MERIT LILIN MALAYSIA SDN BHD

Tel: +60 3 6274 5066

Fax: +60 3 6276 9011

Email: lhte@lilin.com.my

Address: 32, Jalan Ara Sd7/3b, Bandar Sri
Damansara, 52200 Kuala Lumpur

Spain Office

MERIT LILIN SPAIN S.L.

Tel: +34 90 210 8533

Fax: +34 91 663 6669

Email: info@meritlilinspain.com

Address: Avda. Montes De Oca No 19- Nave 3
28703 S.S. De Los Reyes, Madrid

UK Office

MERIT LILIN UK LTD.

Tel: +44 870 120 5550

Fax: +44 870 120 5551

Email: uk@meritlilin.com

Address: Davy Avenue, Knowlhill Milton
Keynes, MK5 8NB

USA Office

MERIT LILIN (USA) CORP.

Tel: +1 626 930 1000

Fax: +1 626 930 1001

Email: info@meritlilin.us

Address: 11836 Clark St. Arcadia, CA 91006

