



Compact package, includes connectors and Plug for ease of installation

Design for G.lite Application

100 mA DC Loop Current Capacity

Specifications

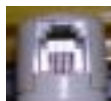
POTS Port Impedance	600Ω	Return Loss @ERL	25 dB Min
Insertion Loss @1KHz	-0.7dB Max	@SRL	20 dB Min
Insertion Loss @1KHz / 5 Filter	-0.8 dB Max	@SRLH	15 dB Min
In band Ripple 1KHz/2.8KHz	<0.1 dB		
In band Ripple 1KHz/2.8KHz / 5 Filter	<0.8 dB		
Attenuation @25 KHz	-25dB Min		
@30KHz	-30dB Min	Longitudinal Balance @200Hz~3K	-58 dB Min
DC Resistance each line	25Ω Max		

Dimension

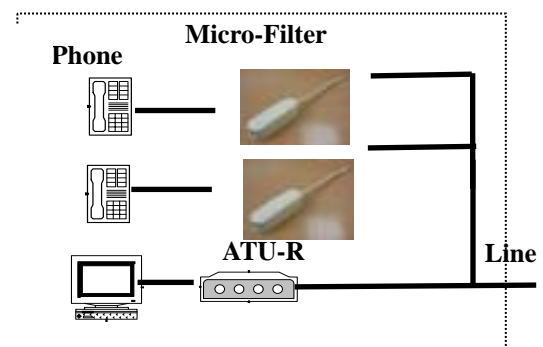
Length = 190 mm

Width = 22 mm

HIGH=24mm



Application



Connector	Function	Style	Tip	Ring
J1	Line	RJ11 Plug	Pin3	Pin4
J2	Phone	RJ11 Jack	Pin3	Pin4

Note

1. Data sheet subject to change without notice
2. RoHS printed for Lead Free product Add "LF" (LF-AMF600P01-05) to order Lead Free product

Data sheet subject to change without notice