



**VigorView**  
**Centralized System Manager**  
**Quick Start Guide**

Version: 1.1

Date: 2005/12/13

## Copyright Information

### Copyright Declarations

Copyright 2005 All rights reserved. This publication contains information that is protected by copyright. No part may be reproduced, transmitted, transcribed, stored in a retrieval system, or translated into any language without written permission from the copyright holders.

### Trademarks

The following trademarks are used in this document:

- Microsoft is a registered trademark of Microsoft Corp.
- Windows, Windows 95, 98, Me, NT, 2000, XP and Explorer are trademarks of Microsoft Corp.
- Apple and Mac OS are registered trademarks of Apple Computer Inc.
- Other products may be trademarks or registered trademarks of their respective manufacturers.

# Table of Contents

<b>1. Introduction</b> .....	<b>1</b>
1.1 Features for VigorView .....	1
1.2 System Requirement.....	2
1.2.1 For the end of Server.....	2
1.2.2 For the end of Client.....	2
<b>2. Installing VigorView</b> .....	<b>3</b>
2.1 Introduction.....	3
2.2 Installation Procedure.....	3
<b>3. Configuring Web Pages</b> .....	<b>11</b>
3.1 Changing the Password .....	11
3.2 Adding New Users.....	13
3.3 Adding New Network.....	14
3.4 Adding New Device Type.....	15
3.5 Adding New Device (Router) .....	17
3.6 Viewing the Devices Status .....	19
3.6 Configuring and Checking Settings for the Router .....	19
3.7 Operation.....	20
<b>4. Trouble Shooting</b> .....	<b>23</b>
4.1 Checking If the Apache Settings are OK or Not.....	23
4.2 Checking If the PHP Settings are OK or Not.....	23
4.3 Failed to Backup/Upgrade Firmware.....	24
4.4 Cannot Access into VigorView .....	26
4.5 VPN Connection Failed.....	27
4.6 Contacting Your Dealer .....	27

# 1. Introduction

VigorView is a web-based router management system that is written in PHP. With this system, users can easily manage multiple Vigor routers at one time. Instead of SNMP, the configuration of VigorView can be done via telnet, FTP or HTTP, so it can be applied to all Vigor series routers.

The VigorView is a client-server architecture, flexible, easy-to-use central management system. It can manage up-to 1000 DrayTek products. It provides Administration Management, Device Management, Schedule Management and Log Management.

Administrator can use browser anywhere to manage devices from the central management system. Also the administrator can assign other operators to manage or monitor devices on the network. For security reason, VigorView has the ability to make a VPN tunnel when accesses the device.

VigorView provides Firmware Upgrade, Configuration Backup/Restore, and Traffic Monitoring for the device management. The VPN setting is very complicated for general administrators, but VigorView provides a simple VPN Wizard and lets administrators without technical background operate it easily.

In addition, VigorView has a complete log management and monitoring mechanics. You can track what happen easily at any time.

## 1.1 Features for VigorView

- **Administration Management** - It provides three levels – Administrator, Normal User and Guest for administration. The Administrator can assign permissions (Read/Write or Read only) for the Operators.
- **Device Management** - The hierarchical structure separates multiple Networks, and it can be easy to manage the devices.
- **Firmware Upgrade** - The firmware upgrade can be done simultaneously from the VigorView to multiple devices which are located anywhere. And then it generates the firmware upgrade histories, and informs the device owners by mail.
- **Configuration Backup and Restore** - To prevent losing the device's settings, the setting backup schema is very important. The VigorView can backup the devices' settings manually or on schedule. And then it will generate the backup/restore histories.
- **Online Traffic Monitoring** - Each device's LAN/WAN traffic will be collected and recorded on the database. Then VigorView can generate the graph of traffic.
- **VPN Connections Wizard** - The VPN setting is very complicated for normal administrators. But VigorView provides a VPN Wizard and lets administrator without technical background to do it easily. The administrators just select two devices and choose which VPN type they want to use. Next, the VigorView will generate the VPN profile in each device automatically.
- **Multiple Configure** - It is difficult to do a bulk update when you need to modify settings for many devices. VigorView provides a template which you can use to modify the settings of those devices by using telnet commands or web user interface.

- **Secure VigorView** - For the sake of security, VigorView can manage the devices via VPN tunnels.
- **Schedule Management** - The schedules which generated by firmware upgrade or backup other parts can be managed here easily. You can suspend/delete/active or modify the date/time.
- **Log Management** - All actions will be logged from login to logout. It can be tracked if you want to know who did anything or what were done.
- **Syslog** - The syslog server is built-in on VigorView, so it can collect all the syslog information of the devices.

## **1.2 System Requirement**

### **1.2.1 For the end of Server**

#### **Hardware:**

- CPU: Pentium 4 or above
- RAM: 512M or above
- Hard Disk: 10G or above
- Router: All Vigor Routers with remote management and remote firmware upgrading enabled.

#### **Software:**

- Operating System : MS-Windows 2000/XP/Linux  
(for Linux system, users have to adjust some settings manually)
- Web Server : Apach 2.0.54 or higher is recommended
- PHP: PHP5.0.4 or higher.

### **1.2.2 For the end of Client**

#### **Software (browser):**

- Microsoft IE 6.0 or above
- Mozilla firefox

## 2. Installing VigorView

This chapter will guide you to install the software by executing the installation wizard.

### 2.1 Introduction

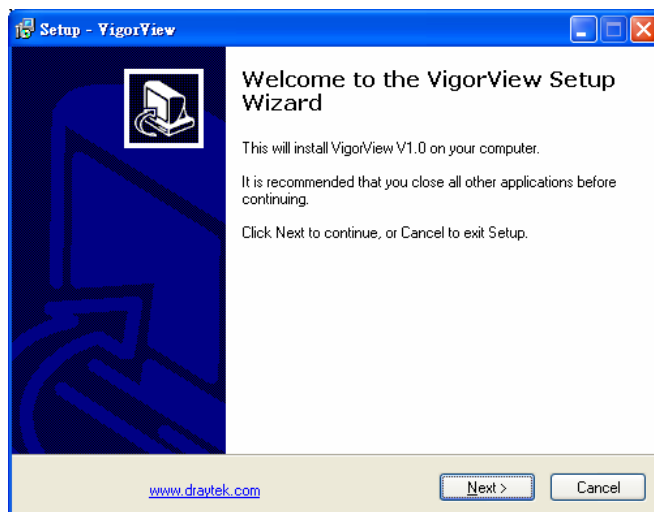
There are three applications that you have to install for using VigorView properly.

- **Apache for Win32** - Download the Apache HTTP Server from <http://httpd.apache.org/download.cgi>. Select the Apache2 Win32 Binary (MSI Installer) version. Then, follow the step-by-step installation.
- **PHP5** - Download PHP5 from <http://www.php.net/downloads.php>. Select the PHP 5.0.4 (or higher) Windows Binary zip package. DO NOT choose the installer binary - the command line option for PHP is only available in the full package and is necessary to run VigorView properly. If you have any problems installing PHP, consult the install.txt file in the PHP package.
- **VigorView** – The setup wizard will guide you to install the application.

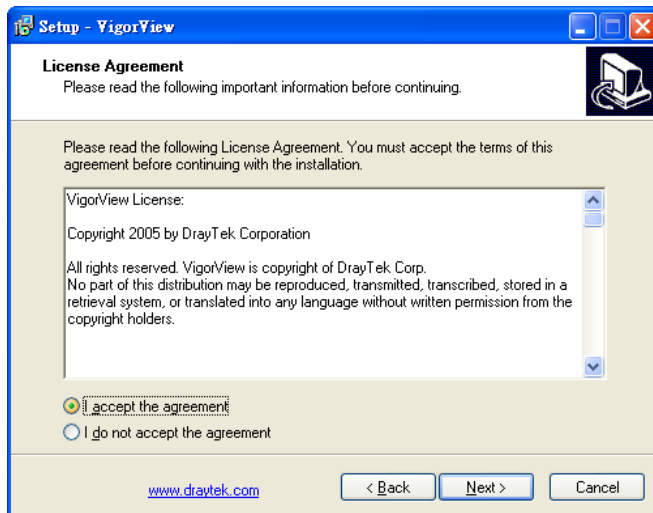
### 2.2 Installation Procedure

Follow the steps below to finish the whole installation.

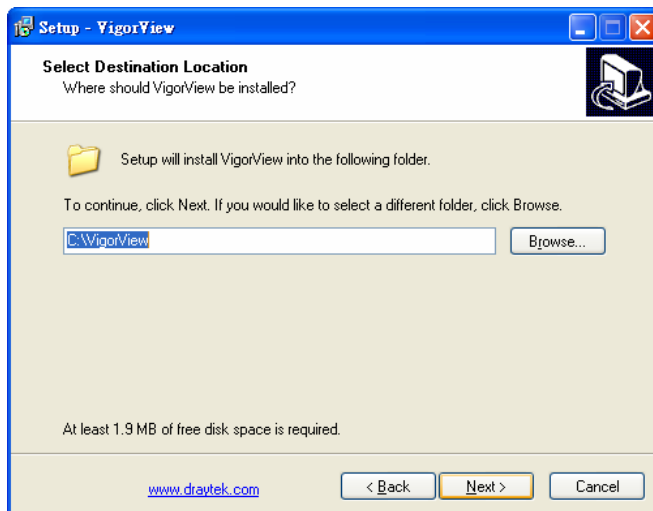
1. Get into [www.draytek.com.tw](http://www.draytek.com.tw) for downloading the file of **vigorviewV1.0**.
2. Execute VigorView setup program. You will get the following screen first, please click **Next** to proceed.



3. Click the radio button of **I accept the agreement** and click **Next**.

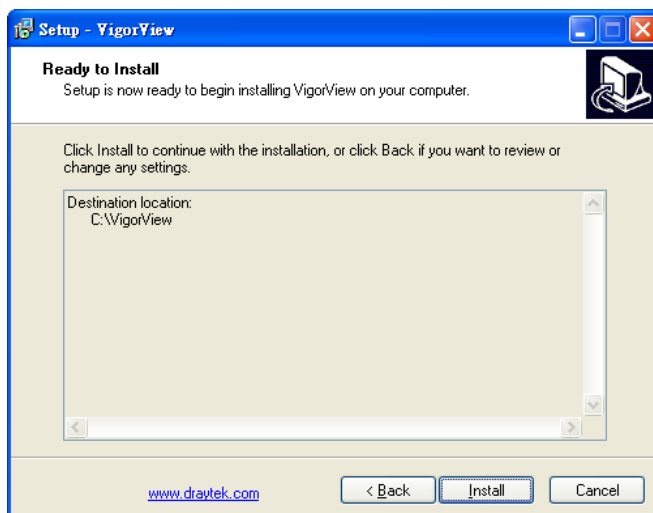


4. The system will determine the destination location. Simply click **Next** to continue.

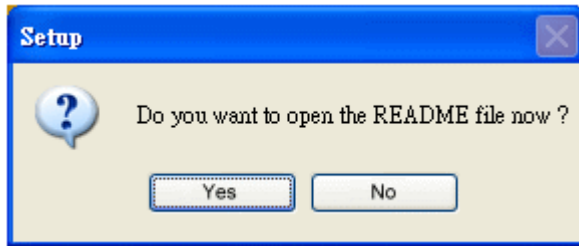


Note: Do not change the default directory of VigorView.

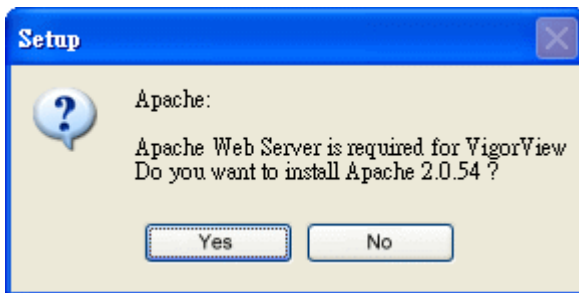
5. In this screen, click **Install**.



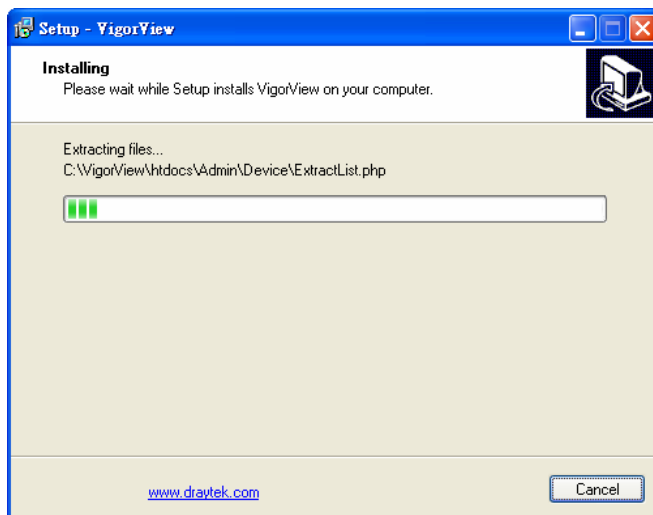
6. The system will ask you to install PHP first. Please click **Yes**.



7. Then it will ask you to install Apache. Click **Yes** again.



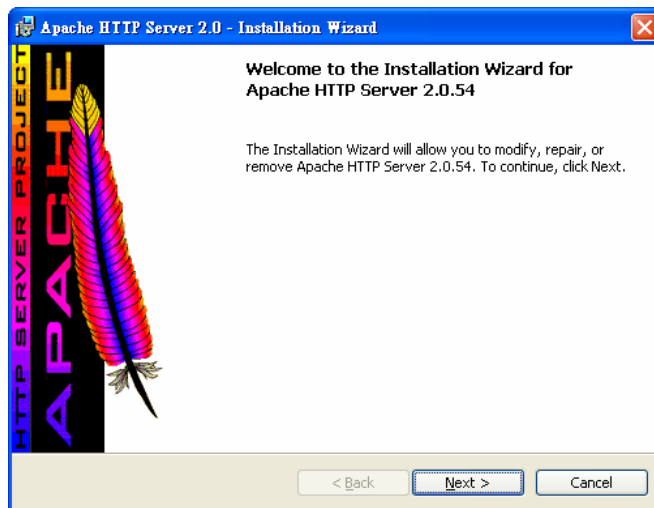
8. Wait for the files copied. Later the following screen will appear.



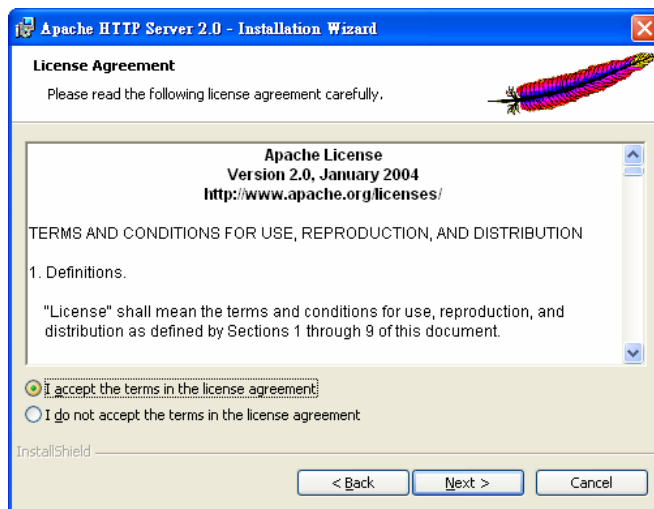
9. The Apache Install dialog appears. Click **OK**.



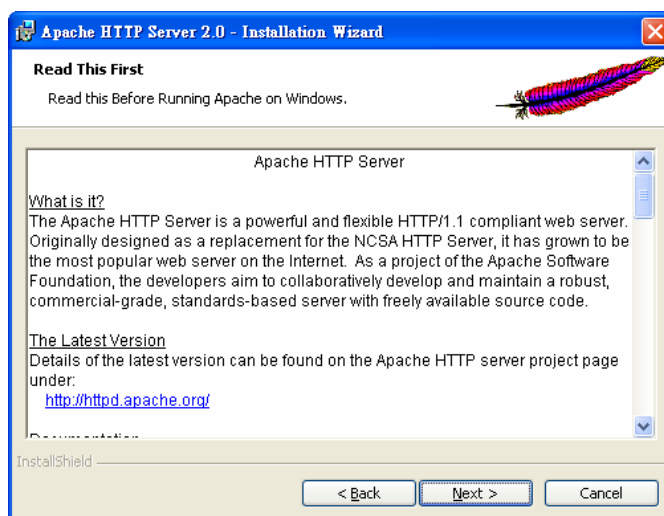
10. Next, the following dialog will appear to inform you. Click **Next** for next step.



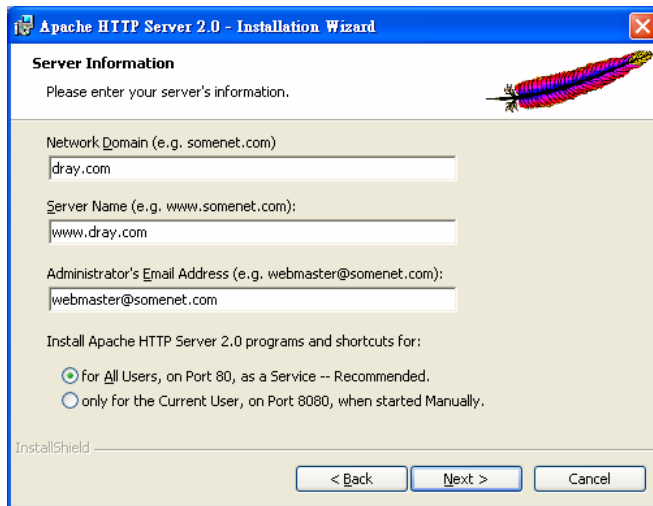
11. Click the radio button of *accept* and click **Next**.



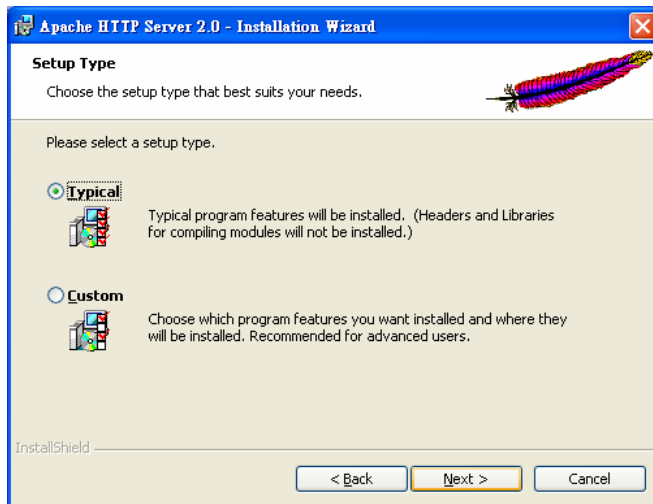
12. Read this page first and click **Next**.



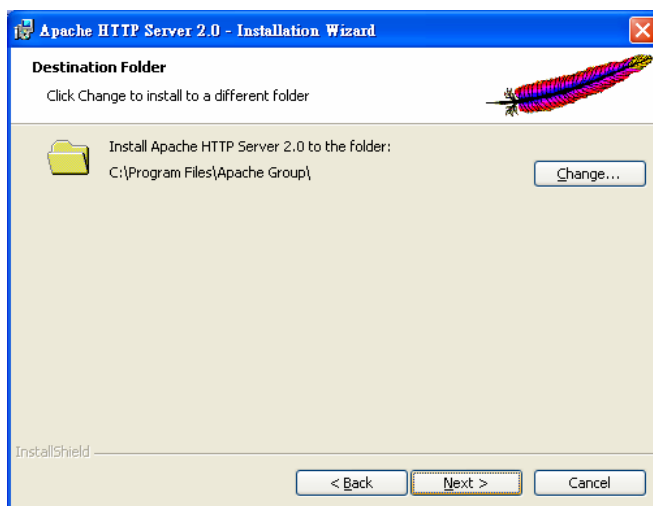
13. The system will search for the proper files and download the files automatically. Then it will execute the installation procedure and display the following screen.



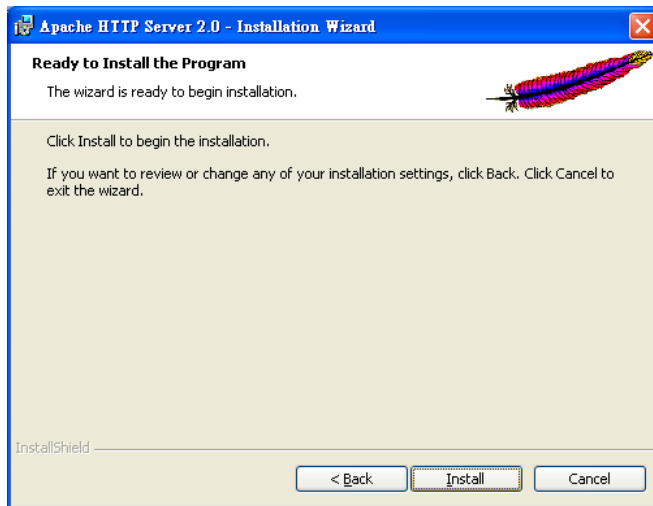
14. Please type in required server's information and click **Next** to get into the following screen.



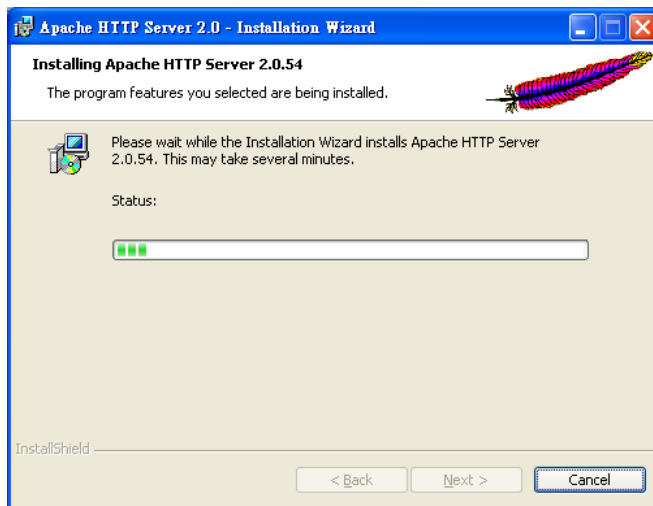
15. Click **Typical** and click **Next** to get the following screen.



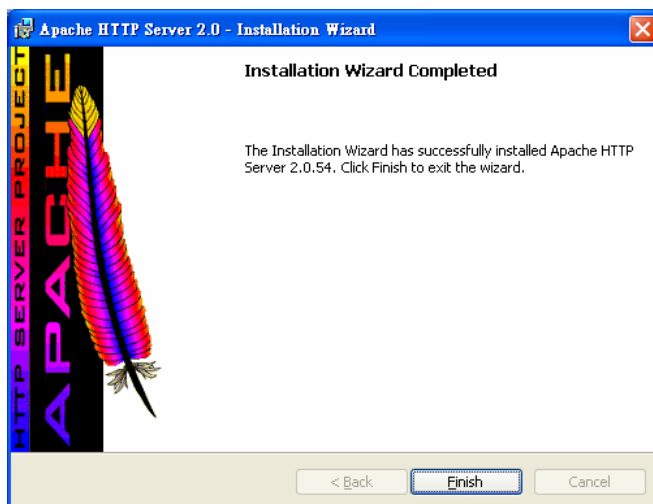
16. Wait for the files copied to your computer and then click **Install**.



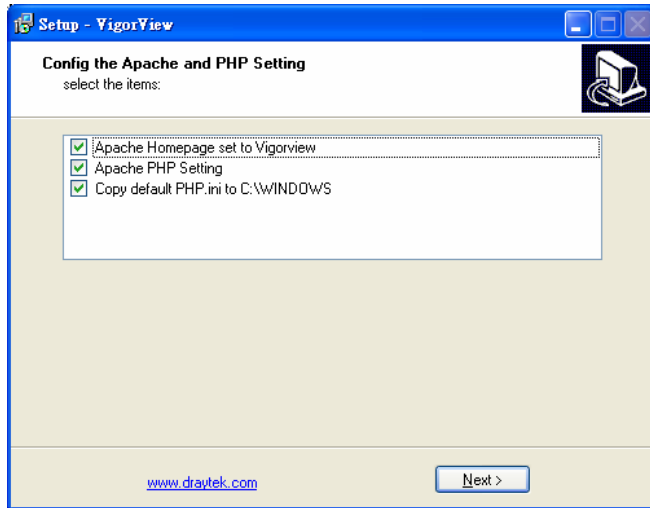
17. Wait for the system to copy corresponding files to your computer.



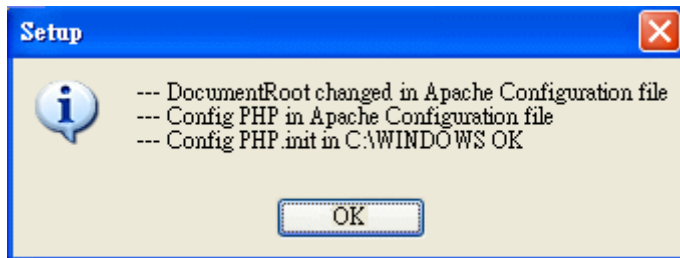
18. When the installation is finished, please click **Finish**.



19. The setup program will guide you returning to the VigorView installation wizard. And the following screen will appear.

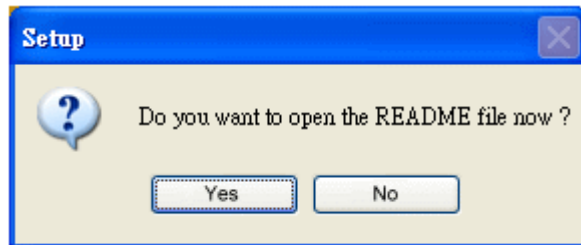


20. After you click **Next**, the following dialog will appear.



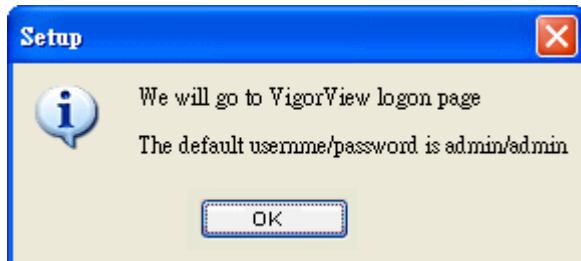
Please click **OK**.

21. Next, the program will ask you to open README file. Click **OK** to open it, or click **No** to ignore the file.



At this time, Apache restart procedure will be executed automatically.

22. The system will guide you to access into VigorView logon page.

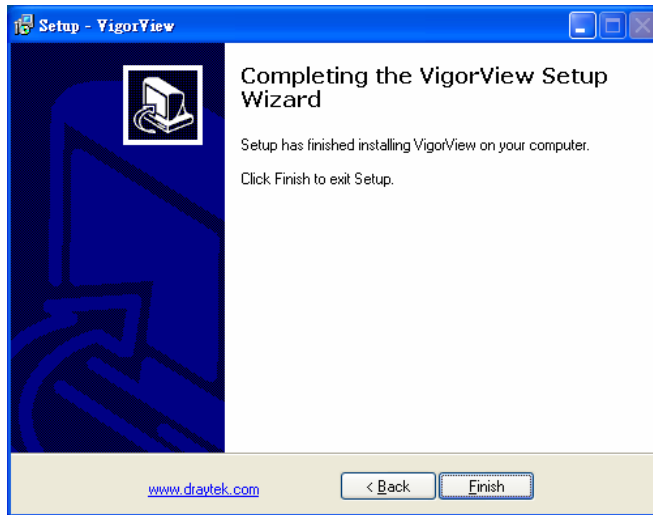


23. Click **OK**. The system will guide you to access into the web page of **127.0.0.1**. You should see login page of VigorView if the installation is successful.



The default username/password is **admin/admin**. After logging in, you may want to change the admin password and add a normal user. Please go to next chapter for configuring web pages.

24. Return to the setup program of VigorView, click **Finish** on the following screen to finish the installation.



## 3. Configuring Web Pages

Before using the features of VigorView, you have to configure web pages for the following purposes:

- Adding new user login account
- Adding new network to group your devices
- Adding new device type for different devices
- Adding new device (router) information
- Connecting to device (router) and viewing router status

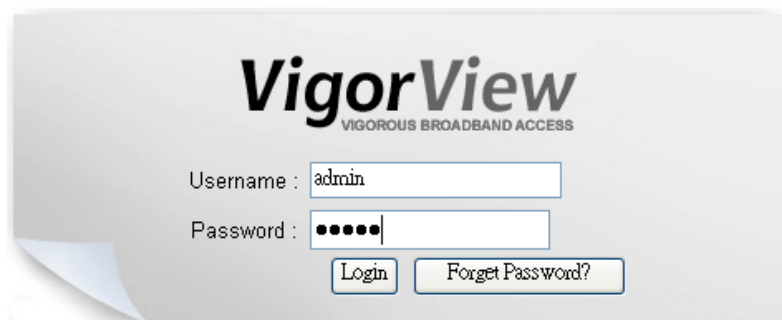
After finishing the above items, you can perform operations on the router for firmware upgrade, backup, and etc.

### 3.1 Changing the Password

The first thing that you have to do is changing the password of accessing Vigor View.

Please do the following:

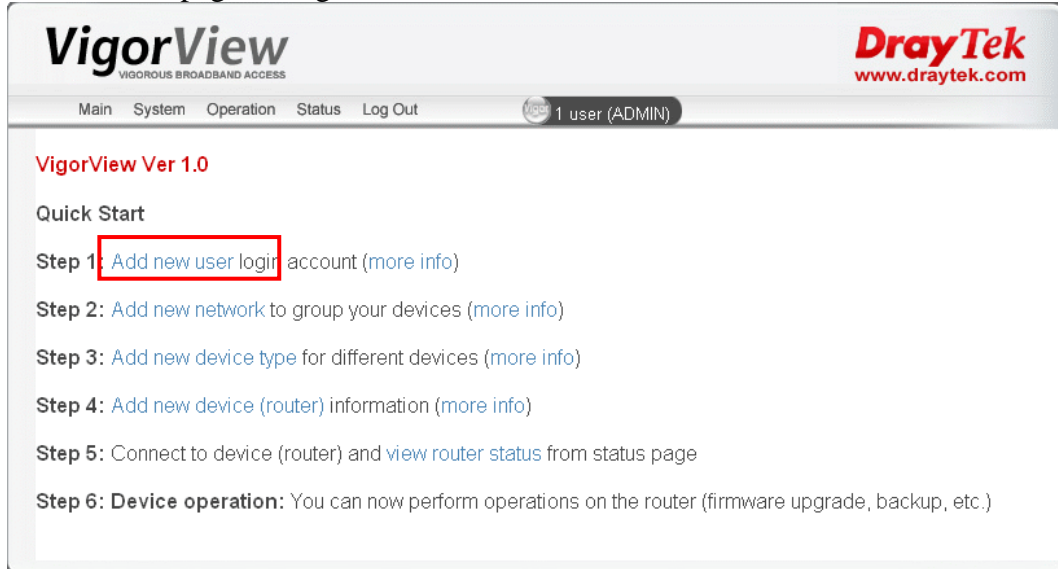
1. Access into the web page of **127.0.0.1**. Type in **admin** for the username and password, and click **Login**.



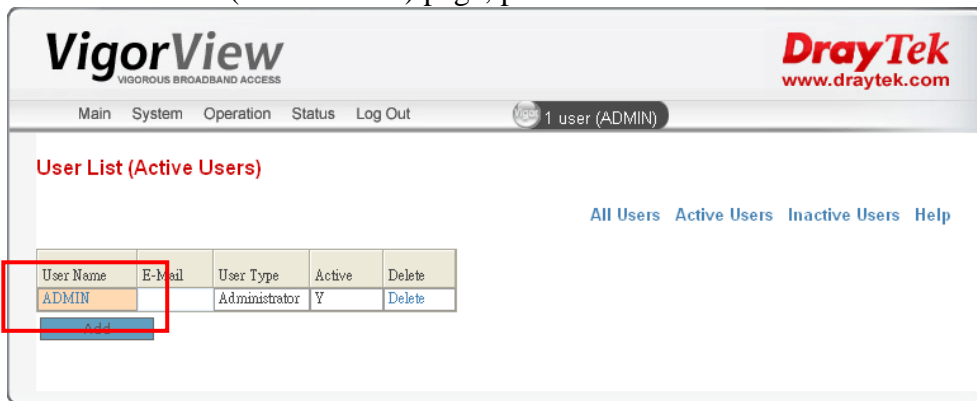
**DrayTek**

Copyright (c) 2005, DrayTek Corp. All Rights Reserved.

2. On the home page of VigorView, click **Add new user** link.



3. On the User List (Active Users) page, please click **ADMIN**.



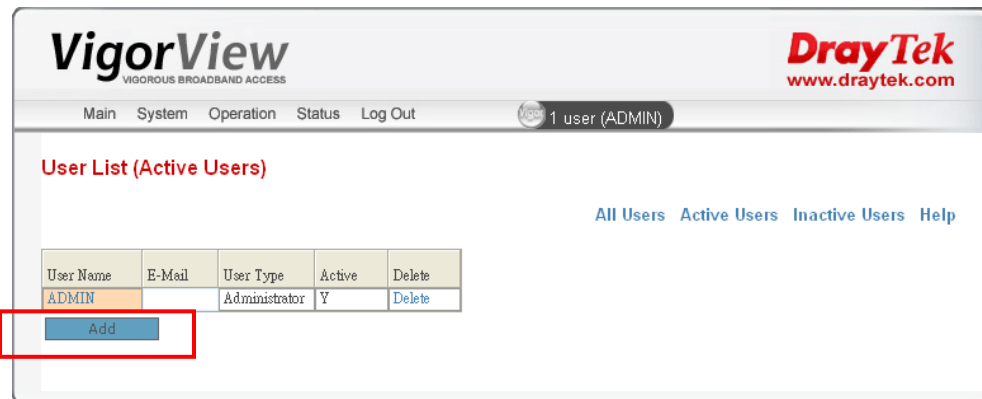
4. On the page of **User Modify**, type in new password on the field of **Password**. Next, retype the one on the **Confirm Password**. Type a valid e-mail address on the field of E-mail. As to **User Type**, please choose **Administrator**. Then click **Modify**.

**User Modify**

User ID (Upper Case)	ADMIN
Password	••••••••
Confirm Password	••••••••
E-mail	yfn@hotmail.com
User Type	Administrator ▼
Active	<input checked="" type="checkbox"/>
<input type="button" value="Modify"/> <input type="button" value="Cancel"/>	

## 3.2 Adding New Users

1. On the User List (Active Users) page, please click **Add**.



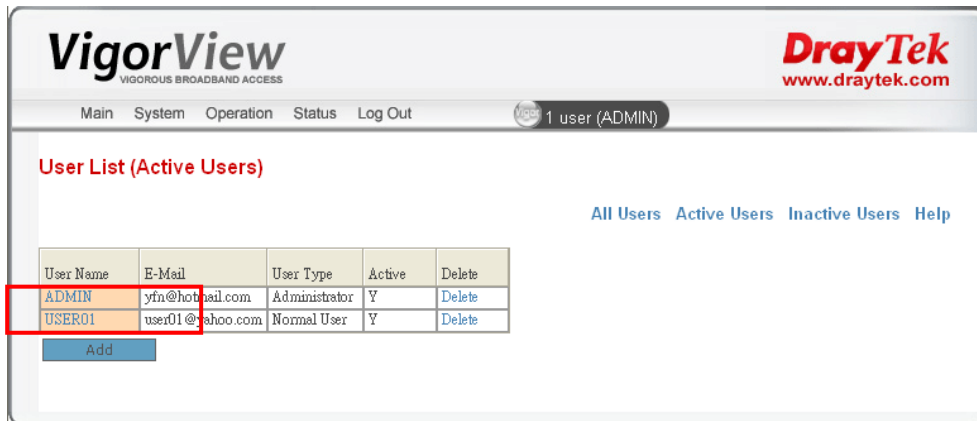
2. On the page of **User Add**, type in new password on the field of **Password** (do not set the same password as of the administrator). Next, retype the one on the **Confirm Password**. Type a valid e-mail address on the field of E-mail. As to **User Type**, please choose **Normal User**. Then click **Add**.

### User Add

User ID (Upper Case)	<input type="text" value="USER01"/>
Password	<input type="password" value="••••••"/>
Confirm Password	<input type="password" value="••••••"/>
E-mail	<input type="text" value="user01@yahoo.com"/>
User Type	Normal User <input type="button" value="v"/>
Active	<input checked="" type="checkbox"/>
<input type="button" value="Add"/> <input type="button" value="Cancel"/>	



3. A new item with the name of **USER01** is created and shown on the page of User List (Active Users).

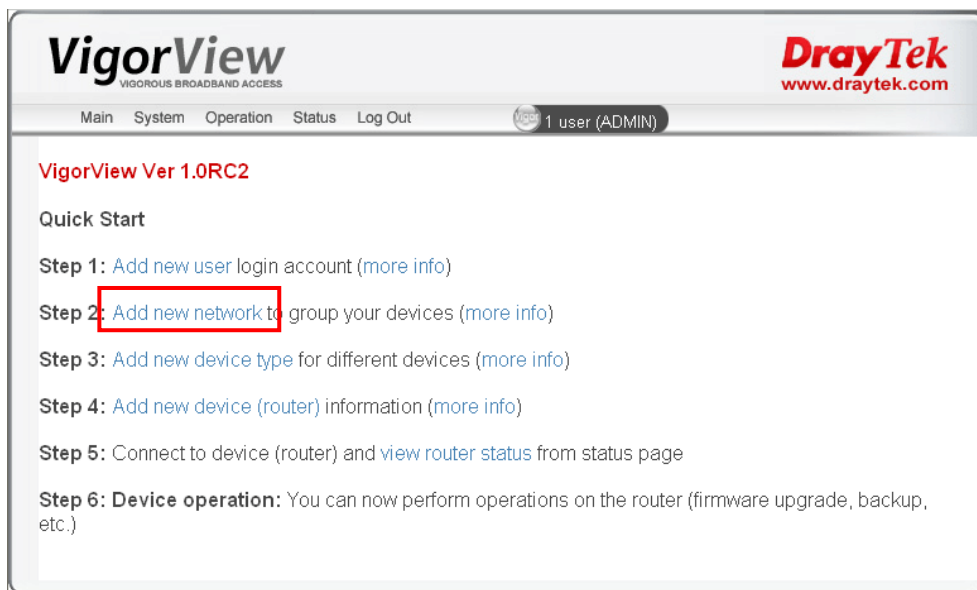


4. Repeat the same procedure for adding more users.

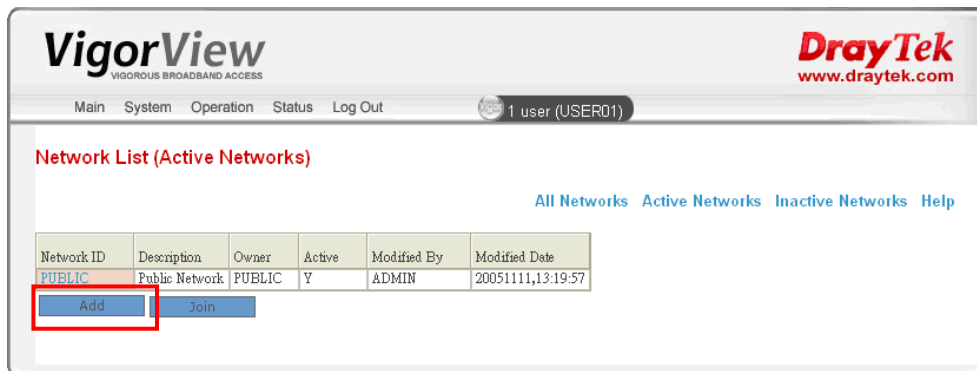
### 3.3 Adding New Network

For the sake of security of network, please use new user account to add in network.

1. On the home page of VigorView, click **Add new network** link.



2. When the Network List page appears, click **Add**.



3. On the **Network Add** page, please type in Network ID (with the name that easy to be identified) and write down proper description for the ID. And check the box of **Active**. Finally, click **Add**.

### Network Add

Network ID (Upper Case)	<input type="text" value="RD01"/>
Description	<input type="text" value="RD Departments"/>
Active	<input checked="" type="checkbox"/>
<input type="button" value="Add"/> <input type="button" value="Cancel"/>	

4. After clicking **Add**, the new network will be added on the **Network List** (All Networks) with the name that you type above.

**VigorView**  
VIGOROUS BROADBAND ACCESS

DrayTek  
www.draytek.com

Main System Operation Status Log Out 1 user (USER01)

**Network List (All Networks)**

[All Networks](#) [Active Networks](#) [Inactive Networks](#) [Help](#)

Network ID	Description	Owner	Active	Modified By	Modified Date
PUBLIC	Public Network	PUBLIC	Y	ADMIN	20051111,13:19:57
RD01	RD department	USER01	N	USER01	20051111,13:36:14

## 3.4 Adding New Device Type

1. On the home page of VigorView, click **Add new device type** link.

**VigorView**  
VIGOROUS BROADBAND ACCESS

DrayTek  
www.draytek.com

Main System Operation Status Log Out 1 user (ADMIN)

**VigorView Ver 1.0RC2**

**Quick Start**

**Step 1:** [Add new user login account](#) ([more info](#))

**Step 2:** [Add new network](#) to group your devices ([more info](#))

**Step 3:** Add new device type for different devices ([more info](#))

**Step 4:** [Add new device \(router\)](#) information ([more info](#))

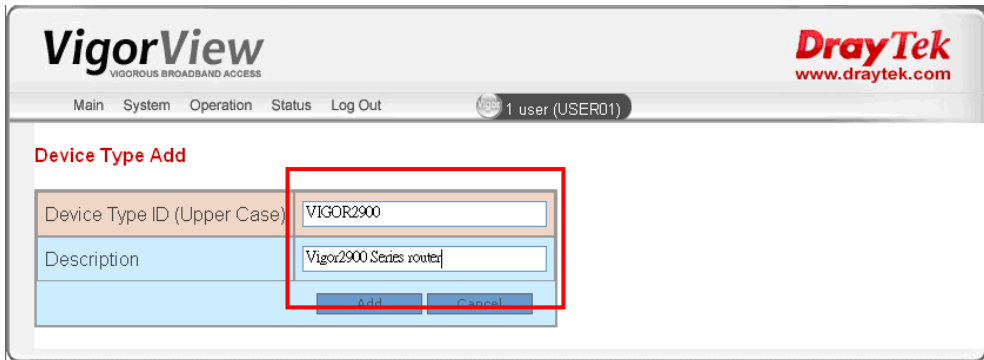
**Step 5:** Connect to device (router) and [view router status](#) from status page

**Step 6: Device operation:** You can now perform operations on the router (firmware upgrade, backup, etc.)

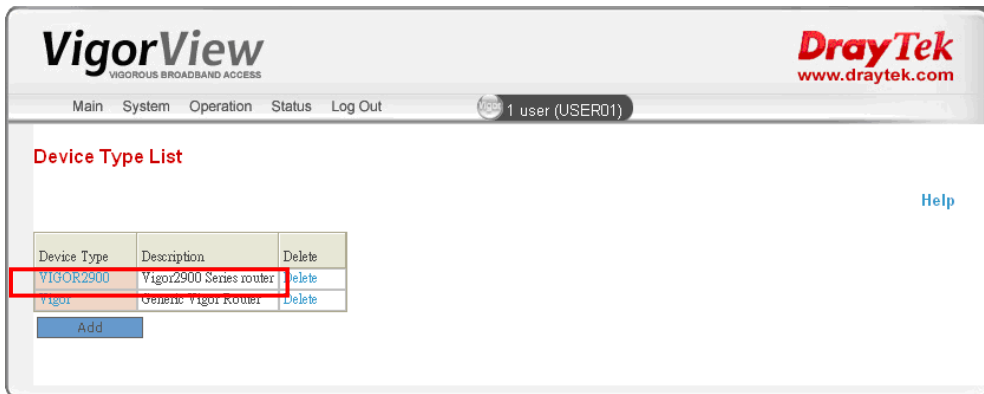
2. When the **Device Type List** page appears, please click **Add**.



- On the **Device Type Add** page, please type in the device type ID and the corresponding description for the router. Then click **Add** again.

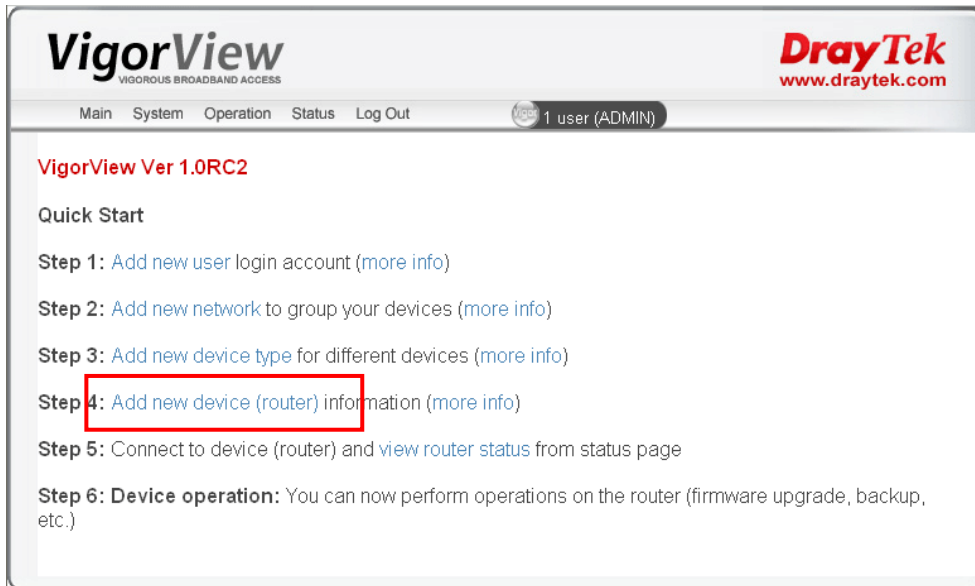


- Now, the new device type will be displayed on the **Device Type List** page.

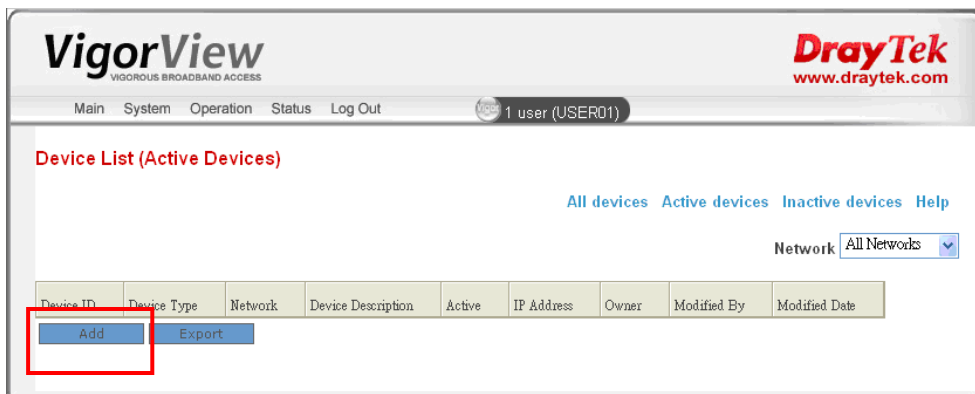


### 3.5 Adding New Device (Router)

1. On the home page of VigorView, click **Add new device (router)** link.



2. On the **Device List (Active Devices)** page, click **Add**.



- Type in all the required information on the page. Check on **Active**. Then click **Add**.  
**Device Add**

Device ID (Upper Case)	VIGOR2900
Password	
Device Type	Vigor2900 Series router
Device Description	router of user01
Network	RD department
IP Address	192.168.1.1
Host Name	
Owner	USER01
Telnet Port	23
Ftp Port	21
Http Port	80
Https Port	443
Security	No Secure Connection
Active	<input checked="" type="checkbox"/>
<input type="button" value="Add"/> <input type="button" value="Cancel"/>	

- Now, a new router is added on the **Device List (Active Devices)**.

**VigorView**  
VIGOROUS BROADBAND ACCESS

**DrayTek**  
www.draytek.com

Main System Operation Status Log Out 1 user (USER01)

**Device List (Active Devices)**

[All devices](#) [Active devices](#) [Inactive devices](#) [Help](#)

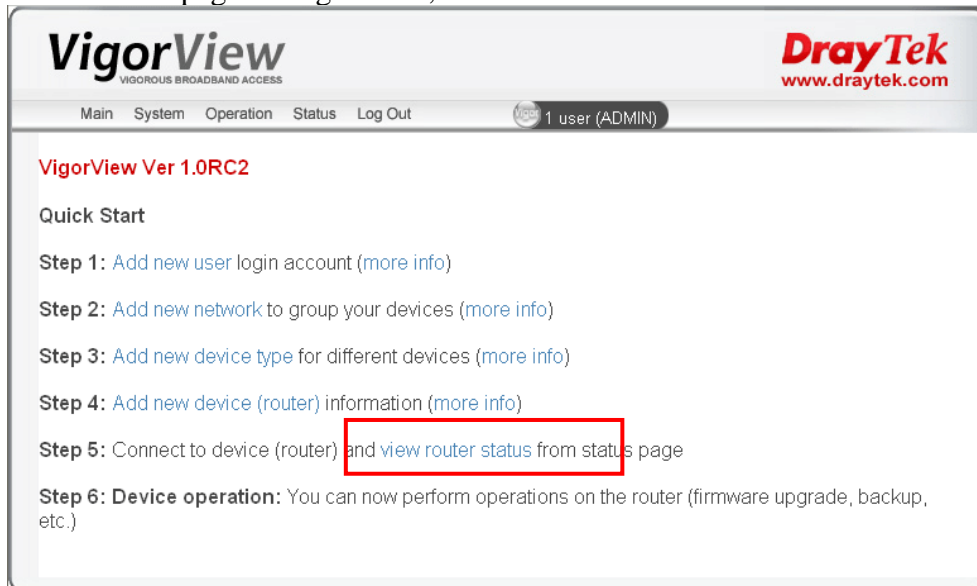
Network: All Networks

Device ID	Device Type	Network	Device Description	Active	IP Address	Owner	Community	Created Date
VIGOR2900	VIGOR2900	RD01	router of user01	Y	192.168.1.1	USER01	USER01	20051111,13:45:23

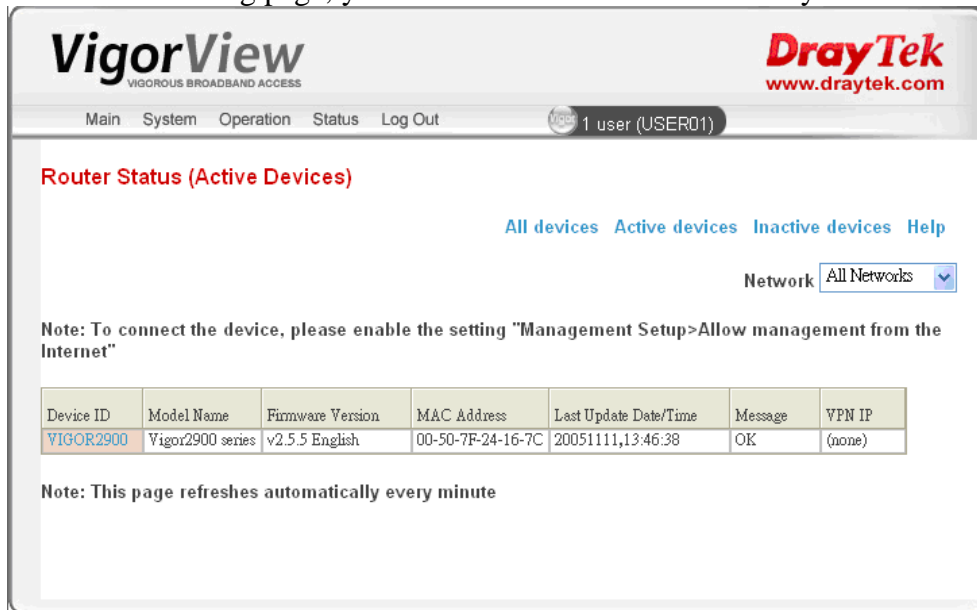
### 3.6 Viewing the Devices Status

To ensure the router is connected or not, you have to check the status of the device.

1. On the home page of VigorView, click **view router status** link



2. From the following page, you should view all the routers that you added before.



3. If the newly added router does not appear on the page, please wait for one minute. The router will refresh the web page with the interval of one minute.

### 3.6 Configuring and Checking Settings for the Router

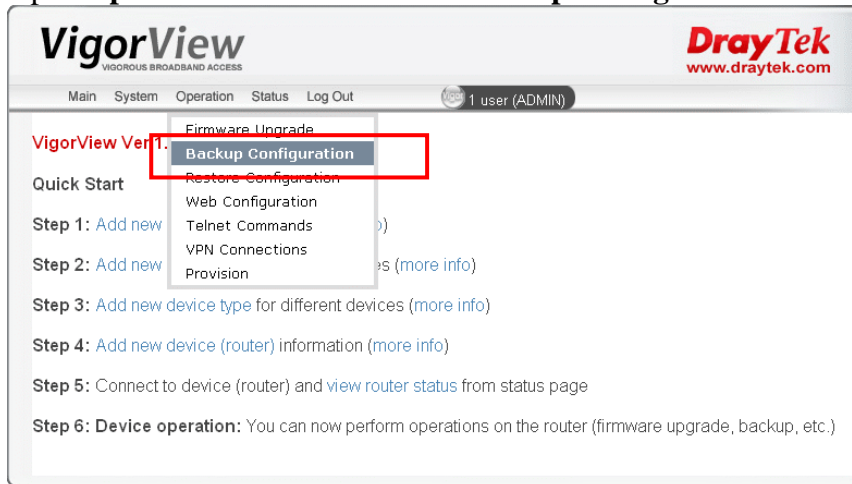
In order to enable remote management, please open the web settings of your router. Under Management Setup (or similar pages), turn on the following flags:

- Allow management from the Internet
- Enable remote firmware upgrade(FTP)

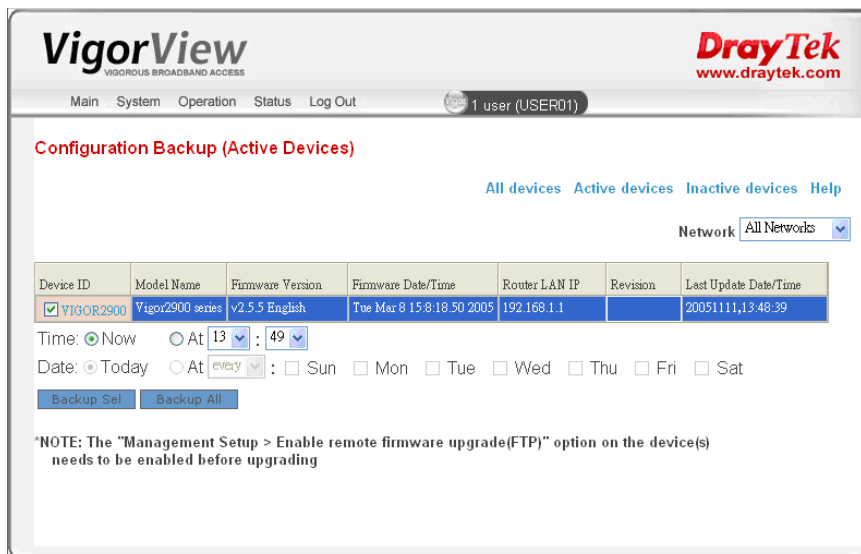
### 3.7 Operation

You can now perform operations on the router for firmware upgrade, backup, and etc. Here we provide an example of backup operation for your reference.

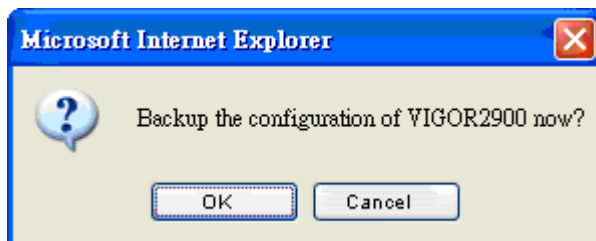
1. Open **Operation** menu and choose **Backup Configuration**.



2. On the Configuration Backup page, select and check the device that you want to backup the configuration. Then click the **Backup Sel** button.



3. A confirmation dialog will be popped up. Please click **OK** to perform the backup.



4. After finishing the backup procedure, the following screen will appear. Please click the **command log** link to see the detailed information.

**VigorView**  
VIGOROUS BROADBAND ACCESS

**DrayTek**  
www.draytek.com

Main System Operation Status Log Out 1 user (USER01)

**Config Backup Info**

Backup Configuration located at C:\VigorView\backup\20051111135121

Backup device : VIGOR2900-----Exec in Background

Backup of your current configuration settings has started. If you want to check the status of the backup, go to the [command log](#) .

[Start/Schedule another backup](#)

5. When the backup is successful, you will see the following message.

**VigorView**  
VIGOROUS BROADBAND ACCESS

**DrayTek**  
www.draytek.com

Main System Operation Status Log Out 1 user (USER01)

**Command Log (Device Log)**

Help

Network All Networks Device All Device Show Data Within 1 week

Reload Log Export

Device ID	Network	Date/Time	Level	Type	Message	By
VIGOR2900	RD01	20051111,13:56:09	INF	BACKUP	[Finish]192.168.1.1 v210_v2.5.5.cfg	USER01
VIGOR2900	RD01	20051111,13:56:08	INF	BACKUP	[Start]192.168.1.1 C:\VigorView\backup\20051111135608	USER01

First Page << Prev 5 Pgs < Prev Page 1-4 / 4 (Page 1 / 1) Next Page > Next 5 Pgs >> Last Page

Delete before Delete all





## 4. Trouble Shooting

This section will guide you to solve abnormal situations if you cannot operate VigorView normally after installing the software and finishing the web configuration. Please follow sections below to check your basic installation status stage by stage.

- Checking if the Apache settings are OK or not.
- Checking if the PHP settings are OK or not.
- Failed to Backup/Upgrade Firmware
- Cannot Access into VigorView
- VPN Connection Failed
- Contacting Your Dealer

### 4.1 Checking If the Apache Settings are OK or Not

Follow the steps below to verify the Apache settings.

1. Open the Apache configuration file from the **Start** menu:  
**Programs -> Apache HTTP Server 2.0.54 -> Configure Apache Server -> Edit the Apache httpd.conf Configuration File.**
2. The PHP should be installed as an Apache Module (do not install it as CGI files). Please check if the httpd.conf file has the following lines. If not, please add them to the file manually:

```
##### Start For PHP 5 #####  
LoadModule php5_module "c:/php/php5apache2.dll"  
ScriptAlias /php/ "c:/php/"  
AddType application/x-httpd-php .php  
##### End For PHP 5 #####
```

3. Find the DirectoryIndex line in **httpd.conf** and add **index.php**.  
DirectoryIndex index.html index.html.var index.php
4. Change the server document root to VigorView's document root:  
Change the line of  
DocumentRoot "C:/Program Files/Apache Group/Apache2/htdocs"  
into  
DocumentRoot "C:/VigorView/htdocs".

### 4.2 Checking If the PHP Settings are OK or Not

Follow the steps below to verify the PHP settings.

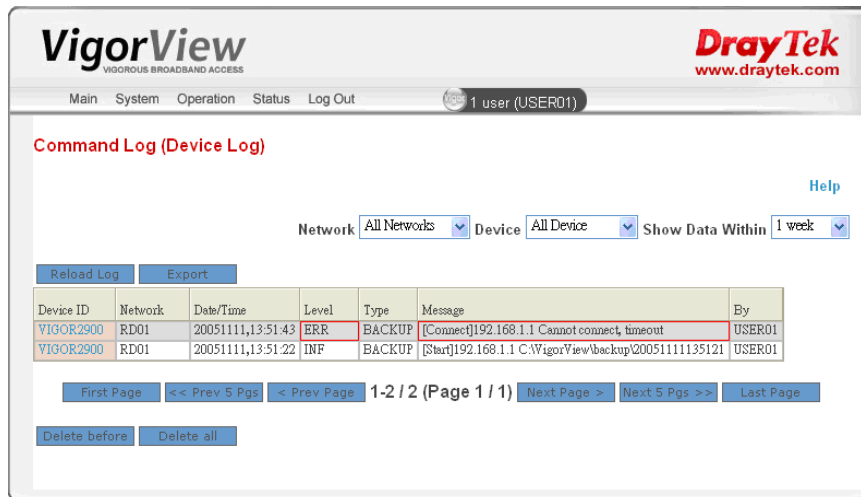
1. Copy the file **C:/PHP/php.ini-recommended** to **C:/windows/php.ini**.
2. If you want to enable firmware uploading, open **php.ini** and change the line of  
upload\_max\_filesize = 2M

into  
upload\_max\_filesize = 8M

3. If you want to enable the mail function, modify the following lines:  
SMTP = 172.16.2.8 ; for Win32 only  
smtp\_port = 25  
sendmail\_from= jtu@draytek.com ; for Win32 only
4. To enable the traffic graph function, you need the gd library. Change  
;extension=php\_gd2.dll  
to  
extension=php\_gd2.dll  
and set the correct extension path  
extension\_dir = "c:/php/ext/"
5. To enable the system log function, you need the socket extension. Change  
;extension=php\_sockets.dll  
to  
extension=php\_sockets.dll  
note that in linux, the syslog port should be larger than 1024, only root can bind a lower port.
6. In order to speedup the php performance and protect our php code, we use eAccelerator to do cache and encode. The following lines should also be added.  
extension="eaccelerator.dll"  
eaccelerator.shm\_size="16"  
eaccelerator.cache\_dir="c:/tmp/eaccelerator"  
eaccelerator.enable="1"  
eaccelerator.optimizer="1"  
eaccelerator.check\_mtime="1"  
eaccelerator.debug="0"  
eaccelerator.filter=""  
eaccelerator.shm\_max="0"  
eaccelerator.shm\_ttl="0"  
eaccelerator.shm\_prune\_period="0"  
eaccelerator.shm\_only="0"  
eaccelerator.compress="1"  
eaccelerator.compress\_level="9"  
For more information about eAccelerator, see <http://eaccelerator.net>. And for Linux installation, read the document in the eaccelerator web.  
  
The win32 binary "eaccelerator.dll" can be downloaded from <http://www.arnot.info/eaccelerator>.
7. To enable encrypt and decrypt function, you need the mcrypt extension.  
Change ;extension=php\_mcrypt.dll to extension=php\_mcrypt.dll and put libmcrypt.dll under C:\WINDOWS\system32.

### 4.3 Failed to Backup/Upgrade Firmware

When you failed to backup your configuration or upgrade firmware with VigorView, you would receive the following error message.



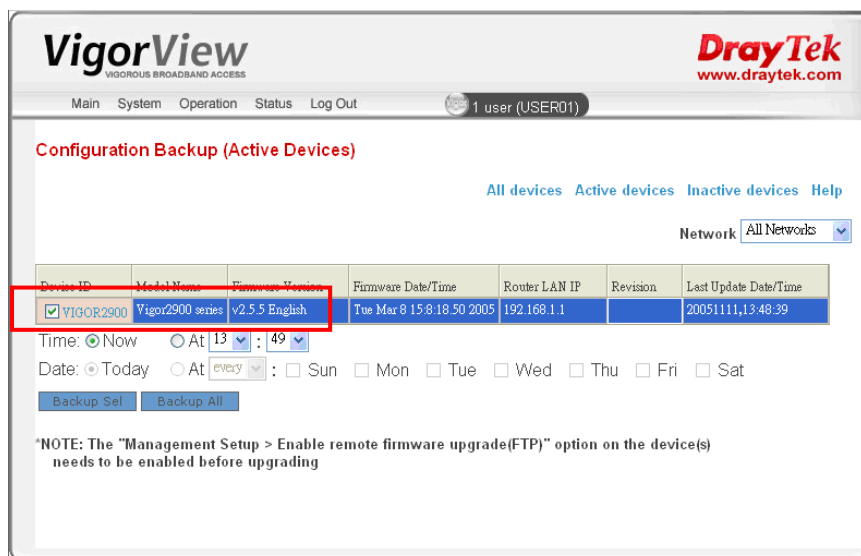
For solving this problem, please activate the following two items (under **Management Setup** or similar pages) by opening the web page of your router.



- **Allow management from the Internet**
- **Enable remote firmware upgrade(FTP)**

When you finished the activation, wait for the router to invoke the settings.

Now, return to **VigorView Configuration Backup** page, select and check the device that you want to backup the configuration again.



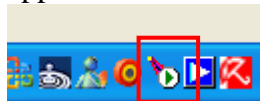
Then click the **Backup Sel** button. Now, you will get the backup completion screen.



## 4.4 Cannot Access into VigorView

While using VigorView, if you cannot access into the web page of VigorView, please do the following:

1. Check if the Apache software is active or not. If yes, an **Apache icon** will appear on the bottom right of your desktop. If not please restart Apache.



2. If Apache cannot be restarted, or there is no response after restarting Apache, it must be something wrong with your computer. Please restart your computer and try to open Apache and VigorView again.

## 4.5 VPN Connection Failed

When you try to build VPN connection and get the following page:

**VigorView**  
VIGOROUS BROADBAND ACCESS

**DrayTek**  
www.draytek.com

Main System Operation Status Log Out 1 user (ADMIN)

**Router Status (Active Devices)**

All devices Active devices Inactive devices Help

Network All Networks

Note: To connect the device, please enable the setting "Management Setup>Allow management from the Internet"

Device ID	Model Name	Firmware Version	MAC Address	Last Update Date/Time	Message	VPN IP
VIGOR2900	Vigor2900 series	v2.5.4.3 English	00-50-7F-24-16-7C	20051125,16:21:18	OK	(none)
VIGOR2900V	Vigor2900 series	v2.5.4 English	00-50-7F-26-71-3D	20051125,16:21:29	OK	(none)

Note: This page refreshes automatically every minute

There is one dimmed key appeared in the column of Device ID and there is no VPN IP created. It means that the VPN connection is failed. The most possible reason might be both routers share the same gateway LAN IP. To solve this problem, please configure the gateway LAN IP addresses for the routers with different values. Then try to build VPN connection again.

## 4.6 Contacting Your Dealer

If the router still cannot work correctly after trying many efforts, please contact your dealer for further help right away. For any questions, please feel free to send e-mail to support@draytek.com.