

4K & H.265 product introduction



Content

1



New technology

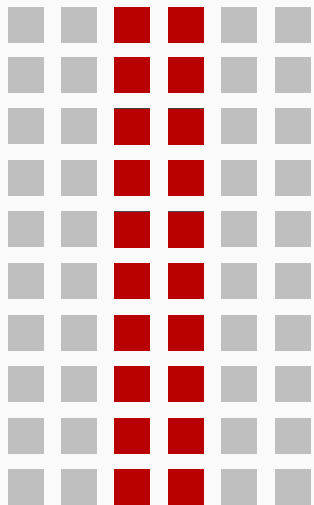
4K technology

H.265 technology

2

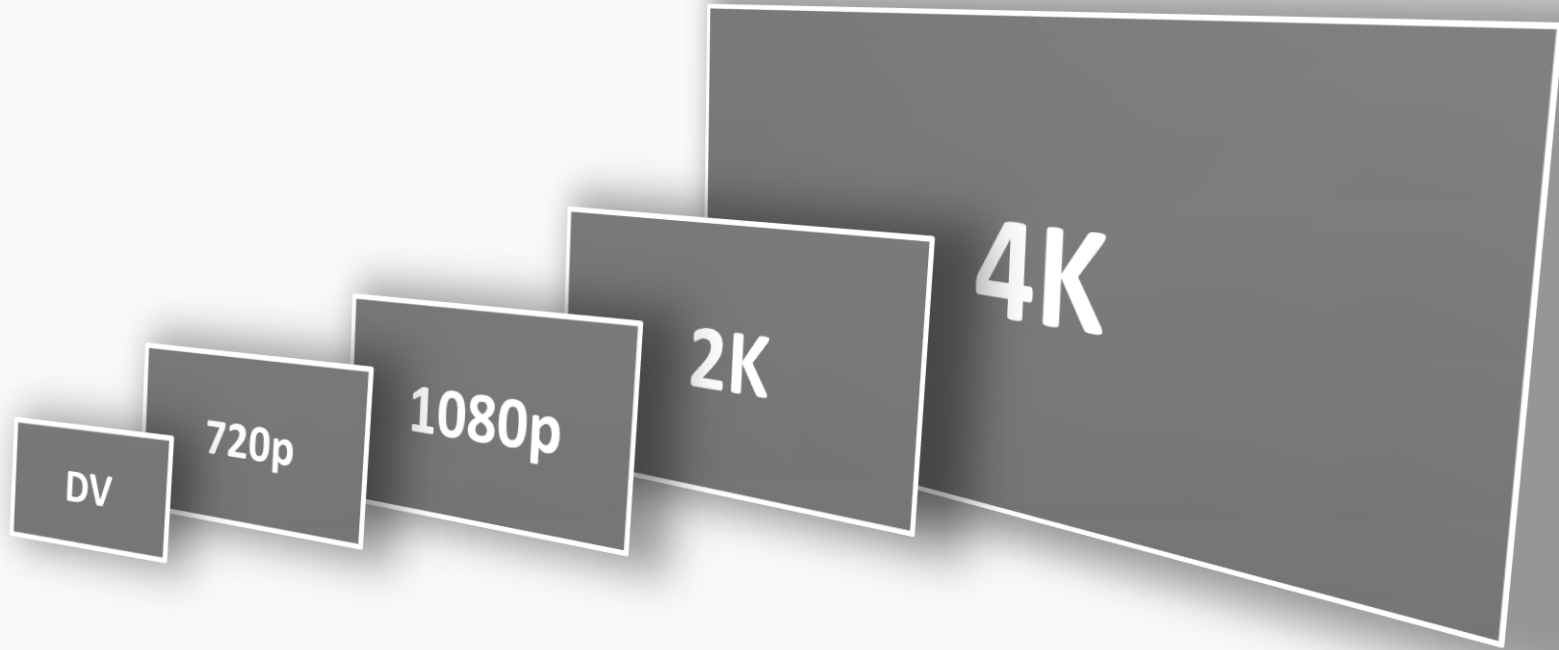


New products



New technology

New technology ---- 4K

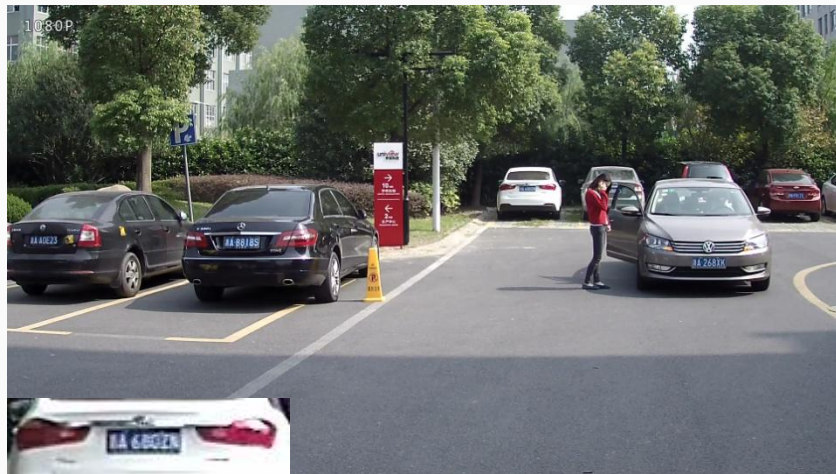


Common 4K Resolution: 3840×2160 , 4096×2160

4 Times to 1080P, 8 Times to 720P

New technology ---- 4K

1080P: 1920x1080



4K resolution: 3840x2160



4K technology get more details than 1080P



New technology ---- 4K

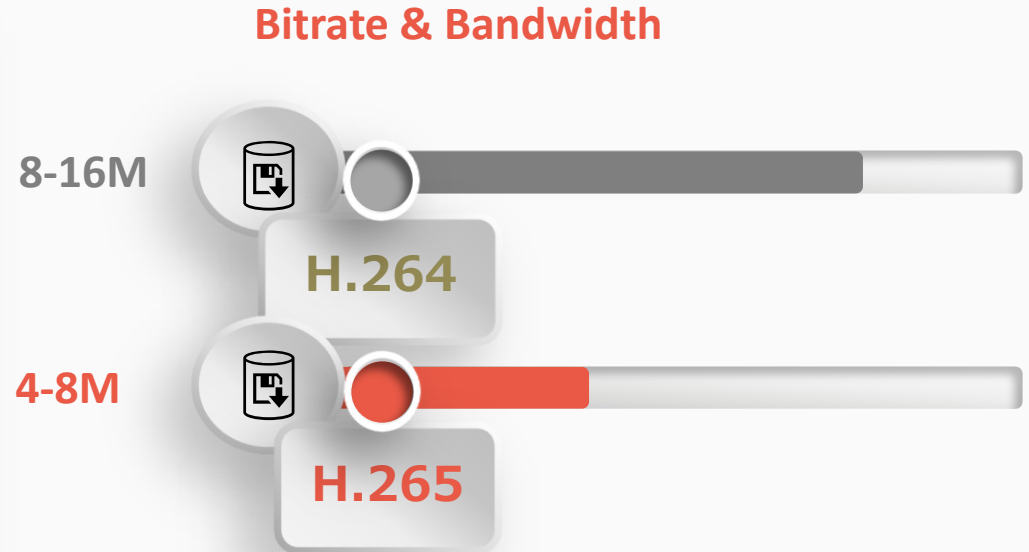


More information details

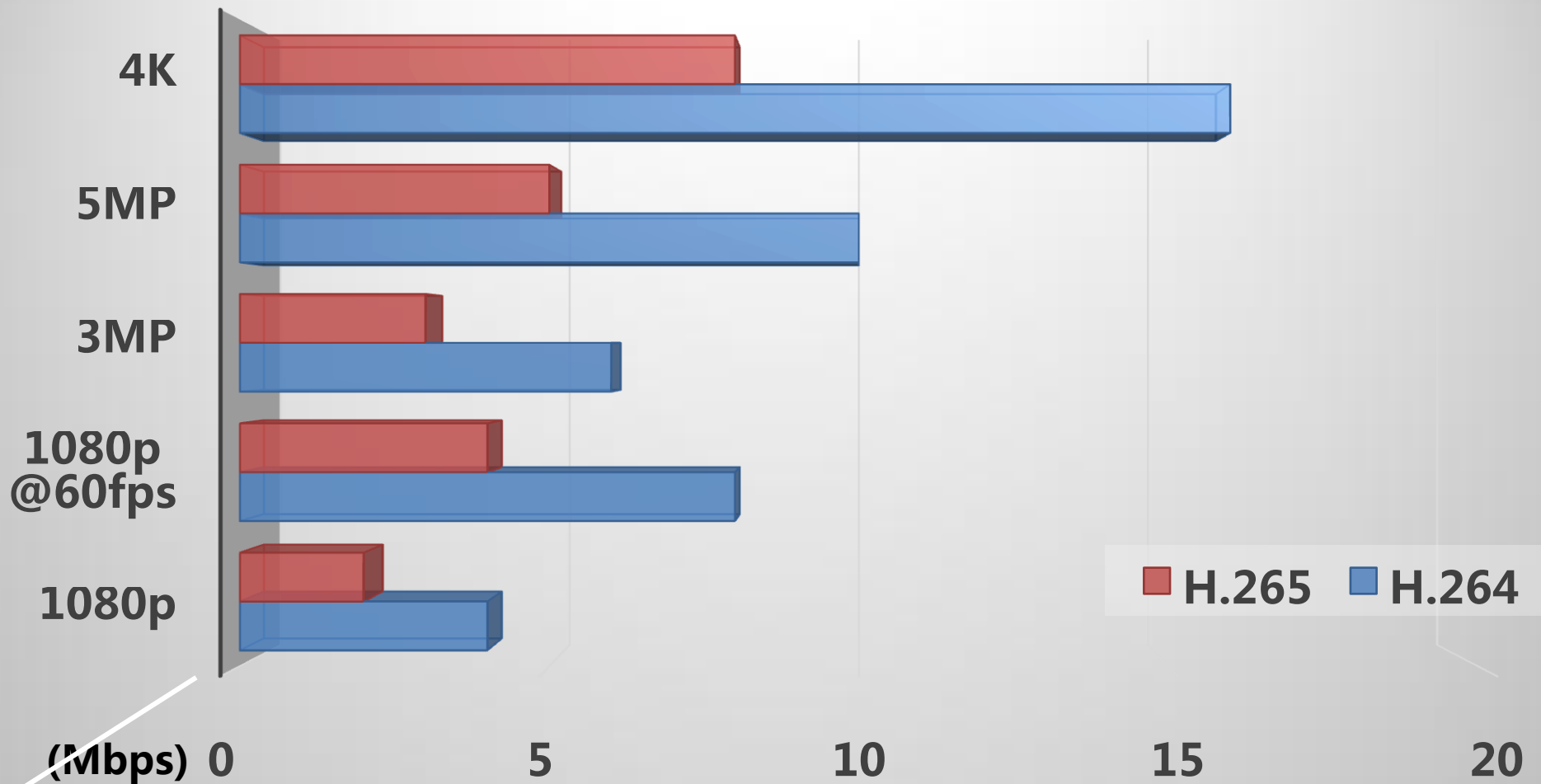
New technology ---- H.265

H.265 aims to use the **half bitrate** of H.264 to play the same quality video of H.264.

H.265 Standard will be choice of Ultra HD of 4K and 8K.



H.265 & H.264 Bitrate Comparison Chart

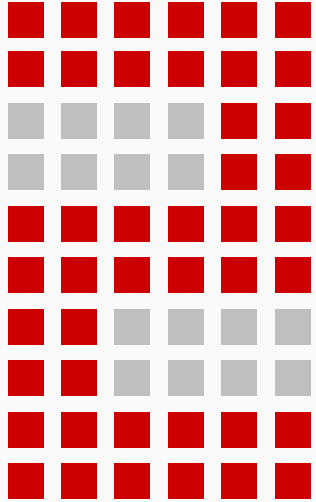


New technology ---- H.265

Normally, the H.264 camera should use 4Mbps bite rate for 1080P encoding.



Compared with H.264, H.265 can realize the 1080P encoding bite rate up to 1.5Mbps.



New products

New Product – front end product



IPC3234SR-DVZ28

4MP motorized lens dome



IPC3614SR3 Series

4MP fixed lens mini dome



IPC2324EBR-DPZ28

4MP motorized lens bullet



IPC2124SR3 Series

4MP fixed lens bullet



IPC262ER5-DUZ

2MP starlight 4X bullet camera

New Product – front end product



IPC6253SR-X33

3MP H.265 33x network IR PTZ



IPC6252SR-X22U

2MP H.265 starlight 22x network IR PTZ

IPC6252SR-X22UG

200W H.265 starlight 22x fiber IR PTZ

New Product



IPC3234SR-DVZ28:

- 2.8~12mm motorized lens
- 120dB WDR
- 30m IR
- 2592*1520@20fps
2560*1440@25fps
- Alarm in/out, audio in/out, BNC, reset button, POE, SD card
- DC12V output
- IK10
- H.265

New Product



IPC3614SR3-DPFXXX series:

- 2.8 / 3.6 / 6.0mm fixed lens
- 120dB WDR
- 30m IR
- 2592*1520@20fps
2560*1440@25fps
- PoE, DC12V
- H.265

New Product

IPC262ER5-DUZ:

- 2.8~12mm, build in 4X zoom camera
- Starlight low illumination
- Auto focus feature
- 120dB WDR
- 80m IR distance
- 1920*1080@30fps
- Alarm in/out, audio in/out, BNC, RS485, SD
- Build in bracket
- H.265
- AC24V, DC12V, PoE



New Product



IPC6253SR-X33:

- 1/2.8 inch 3MP CMOS sensor
- 2048*1536@30fps, 1920*1080@60fps
- 4.5~148.5mm lens
- 33X optical zoom
- 120dB WDR
- 150m IR distance
- Alarm in/out, audio in/out, 1 BNC, 1 RS485
- Support wide range power: AC24V \pm 25%, DC24V \pm 25%
- H.265

New Product

IPC6252SR-X22U(G):

- 1/1.9 inch 2MP CMOS sensor
- 1920*1080@60fps
- 6.5~143mm lens
- Starlight low illumination
- 22X optical zoom
- 200m IR distance
- Alarm in/out, audio in/out, 1 BNC, 1 RS485
- Wide range power supply: AC24V \pm 25%, DC24V \pm 25%
- SFP fiber interface and fiber to network connection (-G model support)
- H.265



New Product – back end product



NVR304E Series

- 16/32-channel input
- Third-party IP cameras supported with ONVIF conformance
- Up to 8 Megapixels resolution recording
- H.265 video compression
- accurate retrieval, instant playback
- 4 SATA HDD up to 24TB
- Support for P2P, UPnP, NTP, DHCP, PPPoE
- Support 2-ch HDMI, 1-ch VGA, 1-ch CVBS, HDMI2 at up to 4K(3840x2160) resolution

New Product – back end product



NVR308E Series

- 32/64-channel input
- Third-party IP cameras supported with ONVIF conformance
- Up to 8 Megapixels resolution recording
- H.265 video compression
- accurate retrieval, instant playback
- 8 SATA HDD up to 48TB
- Support for 12V Power output
- Support for P2P, UPnP, NTP, DHCP, PPPoE
- Support 2-ch HDMI, 1-ch VGA, 1-ch CVBS, HDMI2 at up to 4K(3840x2160) resolution
- Support RAID 1, RAID 5
- Duel network interface

New Product – back end product



NVR308R Series

- 32/64-channel input
- Third-party IP cameras supported with ONVIF conformance
- Support 2-ch HDMI, 1-ch VGA, 1-ch CVBS, HDMI2 at up to 4K(3840x2160) resolution
- Up to 8 Megapixels resolution recording
- Support H.265/H.264 video formats
- Accurate retrieval, instant playback
- Support RAID1, RAID5
- 8 SATA HDD up to 48TB
- Support for 12V Power output
- Support for P2P, UPnP, NTP, DHCP, PPPoE
- Dual network interface



THANKS